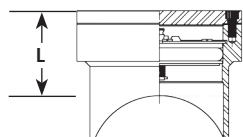


SHORTSTOPP® Welding Fittings and SHORTPLUG™ with Guide Bars



■ 4- to 12-inch



■ 4- to 12-inch Welding fitting includes cover flanges with bolts, gasket and plastic caplugs, SHORTPLUG™ with Guide Bars, O-ring and flanged nipple.

Dimensions

Inches	Size		mm
	DN	L	
4	100	4-3/8	111
6	150	5-3/16	132
8	200	5-5/16	135
10	250	6	152
12	300	6	152

Valve-to-Fitting Adapters for 4- to 12-inch

Inches	Size		Weight		Part Number
	DN	L	Lbs.	Kg.	
4	100	4-3/8	10	5	06-5724-0001-00
6	150	5-3/16	13	6	06-5724-0002-00
8	200	5-5/16	25	11	06-5724-0003-00
10	250	6	40	18	06-5724-0010-00
12	300	6	55	25	06-5724-0011-00
4 x 6	100 x 150	4-3/8	18	8	06-5724-0007-00
6 x 8	150 x 200	5-3/16	28-1/2	13	06-5724-0004-00
8 x 10	200 x 250	5-5/16	44	20	06-5724-0009-00
10 x 12	250 x 300	6	70	32	06-5724-0012-00

The 4- x 6-, 6- x 8-, 8- x 10- and 10- x 12-inch adapters are used to adapt the valve to the next smaller fittings.



SHORTSTOPP® Welding Fittings and SHORTPLUG™ with Guide Bars

SHORTSTOPP® Welding Fittings for Use with PROSTOPPDS™, SHORTSTOPP® II, and SHORTSTOPP® 275 Plugging Machines

Size		Weight		Part Number	Maximum allowable operating pressure (in psi) per ASME B31.8 at -20 to +100° F			
Inches	DN	Lbs.	Kg.		Design Factor			
					0.72	0.6	0.5	0.4
4	100	20	9	26-1535-0402-11	285	285	285	285
6	150	45	20	26-1535-0602-11	285	285	285	285
8	200	75	34	26-1535-0802-11	285	285	285	275
10	250	115	52	26-1535-1002-11	285	285	285	240
12	300	140	64	26-1535-1202-11	285	285	275	220

Minimum Pipe Wall Thicknesses (Inches)

Size Inches	Header Pipe OD	Design Factor Min. Pipe Wall Thickness			
		0.72	0.60	0.50	0.40
4	4.500	0.051	0.061	0.073	0.092
6	6.625	0.075	0.090	0.108	0.135
8	8.625	0.098	0.177	0.140	0.176
10	10.750	0.122	0.146	0.175	0.219
12	12.750	0.144	0.173	0.208	0.260

Spare O-Rings & Gaskets

Size Inches	DN	Spare O-Rings	Spare Gaskets
		Part Number	Part Number
4	100	00-1250-0001	00-5238-0004-01
6	150	00-1250-0002	00-5238-0006-01
8	200	00-1250-0003	00-5238-0008-01
10	250	00-1250-0004	00-5238-0010-01
12	300	00-1250-0005	00-5238-0012-01

Note: The TDW fitting provides sufficient material wall thickness for itself and in many cases reinforcement for the branch opening in the pipe. However, the chart above specifies minimum wall thickness of the pipe for self reinforcement. (Based on 35,000 PSI SMYS)

SHORTSTOPP® Welding Fittings and SHORTPLUG™ with Guide Bars

4-inch Spool Adapter, 06-1165-0176-00

(required to set the SHORTPLUG™ with Guide Bars)

Equipment	Housing	Required
SHORTSTOPP® II	08-3347-0000	Yes
SHORTSTOPP® II	08-3352-0000	Yes
SHORTSTOPP® 275	06-1542-0000	Yes
SHORTSTOPP® 275	08-0941-0000	No
SHORTSTOPP® 275	08-1748-0000	No

12-inch Spool Adapter, 06-1165-0180-00

(required to set the 10-inch SHORTPLUG™ with Guide Bars)

Equipment	Housing	Required
PROSTOPP DS™	06-1165-0180	No
SHORTSTOPP® II	08-3351-0000	Yes
SHORTSTOPP® 275	06-1546-0000	No
SHORTSTOPP® 275	08-0945-0000	No

6-inch Spool Adapter, 06-1165-0177-00

(required to set the SHORTPLUG™ with Guide Bars)

Equipment	Housing	Required
PROSTOPP DS™	06-1165-0177	Yes
SHORTSTOPP® II	08-3348-0000	Yes
SHORTSTOPP® II	08-3353-0000	Yes
SHORTSTOPP® 275	06-1543-0000	no
SHORTSTOPP® 275	08-0942-0000	No

12-inch Spool Adapter, 06-1165-0180-00

(required to set the SHORTPLUG™ with Guide Bars)

Equipment	Housing	Required
PROSTOPP DS™	06-1165-0180	No
SHORTSTOPP® II	08-3351-0000	No
SHORTSTOPP® 275	06-1546-0000	No
SHORTSTOPP® 275	08-0945-0000	No

8-inch Spool Adapter, 06-1165-0178-00

(required to set the SHORTPLUG™ with Guide Bars)

Equipment	Housing	Required
PROSTOPP DS™	06-1165-0178	Yes
SHORTSTOPP® II	08-3349-0000	Yes
SHORTSTOPP® II	08-3350-0000	No
SHORTSTOPP® 275	06-1544-0000	No
SHORTSTOPP® 275	08-0943-0000	No