

Stopp® & Stopp® Plus Fittings

with the ProSeries™ Advantage

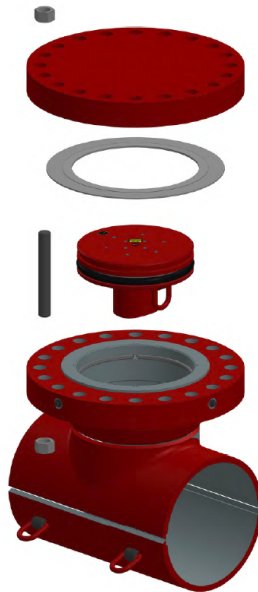
Sizes 4 to 36-inch, Class 600



Bulletin No: 2100.023.01

Version: 08.2019

Supersedes: 2100.023.00 (07.2018)



STOPPLE Fitting

Description

STOPPLE and STOPPLE Plus full-branch split tee fittings Class 600 with the ProSeries Advantage are designed for use with TDW STOPPLE and STOPPLE Train plugging system (except 4-inch). They meet ASME B31.3/B31.4./B31.8 and CSA Z662 CAT I and CAT II specifications for use in pipping, pipeline transportation and gathering systems for liquid, gas hydrocarbons and other fluids as well as refining locations.

STOPPLE and STOPPLE Plus fittings with the ProSeries Advantage are furnished with LOCK-O-RING® and LOCK-O-RING® Plus flanges to accept LOCK-O-RING and LOCK-O-RING Plus Completion plugs, respectively, permitting removal of the tapping valve after work is completed.

The TDW ProSeries Advantage means faster delivery times and broader standard code compliance.

STOPPLE Plus Fitting

Features

Flange-to-sleeve weld-joints and sleeves are designed to meet pressure and reinforcement requirements of ASME and CSA codes and are available in Class 600. Other ASME Class ratings available upon request.

Most fittings are manufactured with a controlled maximum carbon equivalent of 0.43 to make welding easier in harsh environments. Back-up strips are standard and provided for all fittings.

All pressure-containing welds on the fittings have undergone X-ray inspection per ASME and API requirements.

Fitting sleeves are manufactured from a pressure-vessel quality, normalized and killed carbon steel plate with a hardness below 22 HRC.

The charpy impact value of the sleeves at -58°F (-50°C) is 28 J min / 37 J min-avg.

All LOCK-O-RING and LOCK-O-RING Plus completion plugs with the ProSeries Advantage are fitted with low temperature FKM O-rings. The O-rings are compatible with most pipeline products between -50°F to 400°F. All materials used meet ASME B31.3 and 31.8 requirements.

All LOCK-O-RING and LOCK-O-RING Plus completion plugs have scarfed nipples welded.

All blind flange kits are suitable for applications ranging from -50°F to 400°F.

Options

System kits (one part number containing a fitting, completion plug and blind flange, with the option of tapped or plain) are available for the 0.72DF option.

All ProSeries Advantage fittings and associated products are shipped within 3 to 6 weeks, based on the size requested.





STOPPLE & STOPPLE PLUS Fittings

System Kits, with Blind Flange Plain or Tapped *

0.72 DF

Size (inches)	Plain BFK		Tapped BFK	
	STOPPLE	STOPPLE PLUS	STOPPLE	STOPPLE PLUS
4	12334630	12334643	12335288	12335301
6	12334631	12334644	12335289	12335302
8	12334632	12334645	12335290	12335303
10	12334633	12334646	12335291	12335304
12	12334634	12334647	12335292	12335305
14	12334635	12334648	12335293	12335306
16	12334636	12334649	12335294	12335307
18	12334637	12334650	12335295	12335308
20	12334638	12334651	12335296	12335309
22	12334639	12334652	12335297	12335310
24	12334640	12334653	12335298	12335311
30	12334641	12334654	12335299	12335312
36	12334642	12334655	12335300	12335313

*Note: 3/8 NPT threaded connection in blind flange center that allows pressure gauge or valve installation.