



STOPPLE® Plus Fittings

Sizes: 4- Through 20-inch



T.D. Williamson, Inc.

Bulletin No: 1100.007.00

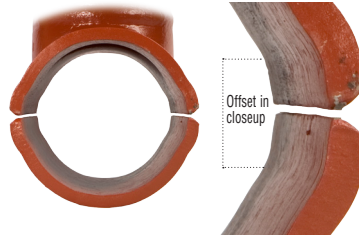
Date: April 2010

Cross Indexing No: n/a

Supersedes: n/a



■ STOPPLE® Plus Fitting



New 4- through 12-inch and 16-inch fittings incorporate a designed and manufactured offset allowing the placement of back-up strips

Description

STOPPLE® Plus fittings are full-branch split tees designed for use with TDW plugging machines. The design has undergone extensive pressure and functional testing. STOPPLE Plus fittings are furnished with LOCK-O-RING® Plus flanges drilled and faced to match ASME Class 150, 300 or 600 flanges in sizes 4- through 20-inches.

STOPPLE Plus fittings are an alternative to conventional TDW STOPPLE fittings and are designed to ASME B31.3, B31.4 and B31.8 requirements. (See chart for MAOP.)

- There are no side openings in the flange, which reduces potential leak paths.
- Interlock system provides positive indication LOCK-O-RING Plus plug leaves are fully extended.
- Complete installation and retrieval of LOCK-O-RING Plus plug is done from plug setter machine. Setting LOCK-O-RING Plus completion plug takes less time compared to setting completion plugs using other high pressure setting methods.

Features

STOPPLE Plus fittings are manufactured with a controlled carbon equivalent of .45 or lower. Factory welding of TDW STOPPLE Plus fittings is 100 percent radiographically inspected. Fitting sleeves are an extruded or fabricated type design, manufactured from a pressure-vessel quality, normalized, killed carbon steel plate with a hardness of Rc22 or lower.

The charpy impact value of the sleeve at -50°F and of the plug at -20°F is 15 ft-lbs average with 12 ft-lbs minimum.

LOCK-O-RING Plus plugs are retained in the STOPPLE Plus fittings by means of retaining leaves, mounted on the plug, that are extended into a mating groove in the flange of the fitting.

Options

Standard STOPPLE Plus fittings are furnished in a kit featuring LOCK-O-RING Plus flange with raised face; matching blind flange, studs, nuts and a stainless steel spiral wound gasket; LOCK-O-RING Plus plug with Buna-N O-ring; scarfed nipple for the LOCK-O-RING Plus plug to replace coupon cut from pipeline; and tile red primer coating.

Options include:

- Neoprene, Viton® or EPDM O-rings
- LOCK-O-RING Plus flange with ring type joint facing
- Backup strips for the longitudinal weld joint of the fitting (optional on 14-, 18- and 20-inch fittings and standard on 4- through 12- and 16-inch fittings).
- Reduced branch variations can be ordered.



■ LOCK-O-RING® Plus Plug

Viton® is a registered trademark of DuPont Performance Elastomers.

ISO 9001 Certified

Toll Free

1-888-TDWmSon (839-6766)

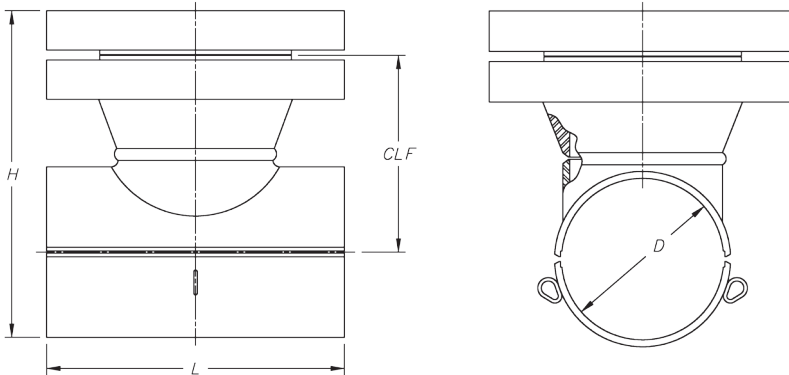


STOPPLE® Plus Fittings

Example

26-2357-0630-14 is a STOPPLE Plus Fitting kit which includes the following:

- A fitting with a 6" run X 6" branch, an ASME Class 300 RF flange, and 2 (loose) longitudinal back-up strips.
- A plug with a Buna-N O-ring and a (loose) scarfed nipple.
- ASME B31.4 design code stamping.
- An ASME class 300 RF blind flange with studs, nuts, and a gasket.



26 - 235 X - X X X X - X X

Back-up Strips

Option	Back-up Strips
6	Not Included (only applicable to 14", 18", and 20" Fittings)
7	Included (applicable to all sizes)

STOPPLE® Plus Fitting Size

Inches (Nom)	Dim CLF (inches)			Dim H (inches)			Dim L Inches	Dim D Inches
	Class 150	Class 300	Class 600	Class 150	Class 300	Class 600		
04	6.390	6.390	7.015	7.500	8.375	8.875	10.75	4.656
06	8.078	8.078	9.078	9.250	10.625	11.375	14.00	6.781
08	9.625	9.625	10.750	10.875	12.500	13.250	16.50	8.812
10	11.218	11.218	12.844	12.500	14.875	15.750	20.00	10.938
12	12.922	12.922	13.609	14.250	15.750	16.625	22.00	12.968
14	13.922	13.922	14.453	15.375	16.750	17.625	26.00	14.218
16	14.640	14.640	15.922	16.250	17.000	19.250	30.00	16.218
18	16.484	16.484	17.640	18.125	19.000	21.250	33.00	18.218
20	17.812	17.812	19.328	19.625	20.375	23.250	36.00	20.218

STOPPLE® Plus Fitting ASME Class

Option	Class
15	150 LB
30	300 LB
60	600 LB

Plug O-Ring Material

Option	O-Ring Material	O-Ring Temp. Ratings
1X	Buna-N O-Ring	212° F
3X	Neoprene O-Ring	225° F
5X	Viton® O-Ring	400° F
7X	EPDM O-Ring	250° F / 500° F Steam

ASME Design Code Stamping

Option	Design Code
X3	B31.3
X4	B31.4
X8	B31.8



STOPPLE® Plus Fittings

Fitting Kit Weights

Size Inches (Nom.)	Weight (lbs.) Class 150	Weight (lbs.) Class 300	Weight (lbs.) Class 600
04	75	100	130
06	130	180	250
08	210	260	380
10	340	410	660
12	510	640	880
14	660	840	1100
16	920	1150	1550
18	1250	1500	2000
20	1600	1950	2650

MAOP in PSI per ASME B31.8 at -20°F to 100°F

Class	Size	0.72 DF	0.6 DF	0.5 DF	0.4 DF
150	4	285	285	285	285
	6	285	285	285	285
	8	285	285	285	285
	10	285	285	285	285
	12	285	285	285	285
	14	285	285	285	285
	16	285	285	285	285
	18	285	285	285	285
	20	285	285	285	285
300	4	740	740	740	590
	6	740	740	740	610
	8	740	740	615	490
	10	740	740	665	530
	12	740	740	615	490
	14	740	740	695	555
	16	740	740	620	495
	18	740	740	685	545
	20	740	740	615	490
600	4	1480	1480	1480	1240
	6	1480	1480	1295	1035
	8	1480	1235	1030	825
	10	1480	1305	1085	870
	12	1480	1260	1050	840
	14	1480	1230	1025	820
	16	1480	1285	1070	855
	18	1480	1300	1080	865
	20	1480	1320	1100	880

Consult Factory for other pressure and temperature requirements



STOPPLE® Plus Fittings

MAOP in PSI per ASME B31.4 at -20°F to 250°F
(212°F max with Buna-N O-ring and 225°F max with Neoprene O-ring)

Class	Size	0.72 DF	0.6 DF
150	4	285	285
	6	285	285
	8	285	285
	10	285	285
	12	285	285
	14	285	285
	16	285	285
	18	285	285
	20	285	285
300	4	740	740
	6	740	740
	8	740	740
	10	740	740
	12	740	740
	14	740	740
	16	740	740
	18	740	740
	20	740	740
600	4	1480	1480
	6	1480	1480
	8	1480	1235
	10	1480	1305
	12	1480	1260
	14	1480	1230
	16	1480	1285
	18	1480	1300
	20	1480	1320

Consult Factory for other pressure and temperature requirements

MAOP in PSI per ASME B31.3 at -20°F to 100°F

Class	Size	PSI
150	All	285
300	All	740
600	4	1480
	6	1155
	8	915
	10	965
	12	930
	14	920
	16	965
	18	975
20	980	

Consult Factory for other pressure and temperature requirements