



# SHORTSTOPP® 3-WAY™ Tees

300D Full Encirclement and SHORTPLUG™ with Guide Bars; Sizes 4- through 12-inch



T.D. Williamson

Bulletin No: 2100.016.02

Version: 05.2010

Cross Indexing No: n/a

Supersedes: 2100.016.01 (10.2004)



## SHORTSTOPP® 3-WAY Tee

300D Full Encirclement and SHORTPLUG™ with Guide Bar, Sizes 4- through 12-inch

### Description

The SHORTSTOPP® 3-WAY™ Tee 300D is welded to an extruded-style split tee. The fittings, 4-inch and larger, are furnished with a flange—drilled, faced, and pressure-rated to match ASME Class 300 flanges. They are used with TDW plugging machines to temporarily plug the line without shutdown while installing a permanent bypass. The flange is machined to accept SHORTPLUGS™ with Guide Bars.

### Features

Quality control measures include inspection to ensure a proper fit on the pipeline, flange alignment verification, and radiographic weld inspection\* to API Standard 1104.

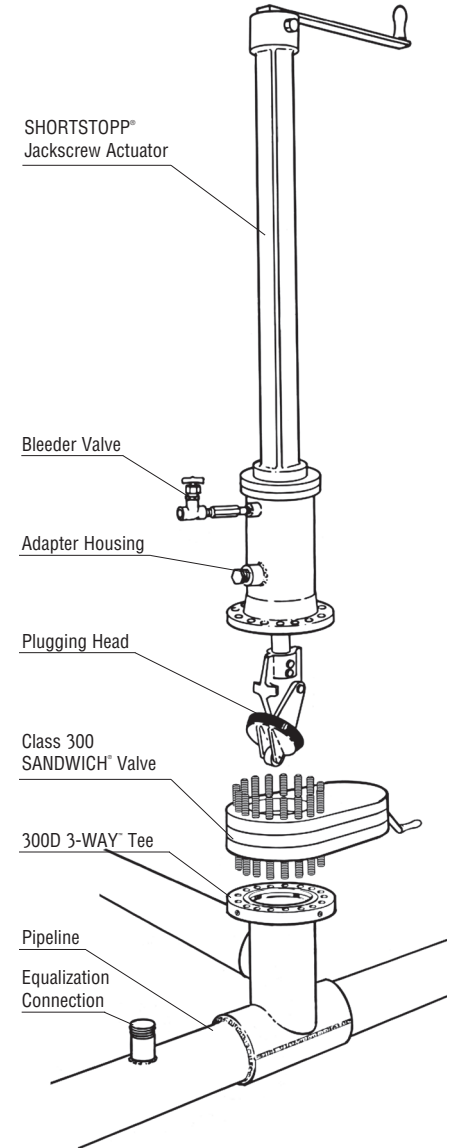
The maximum operating pressure of the SHORTSTOPP 300D 3-WAY Tee is 740 psi (51 bar) at 100°F (38°C). Its maximum operating temperature is 180°F (82°C) at 675 psi (47 bar) per ASME B31.4. See chart on page 2 for MOAP per ASME B31.8

All fittings are stamped with a code number for material identification and a painted band ensures easy alignment in the field. Material certificates are available.

The 4-inch and larger fittings are complete with blind flange, studs, nuts, gasket, O-ring, and SHORTPLUG with Guide Bars

\*100 percent ultrasonic examination performed at TDW's Nivelles, Belgium plant.

### Typical Plugging Setup



Maximum Pressure: 740 psig @ 100°F  
Maximum Temperature: 180°F @ 675 psig

ISO 9001 Certified

Toll Free

1-888-TDWmSon (839-6766)



# SHORTSTOPP® 3-WAY™ Tee 300D Full Encirclement and SHORTPLUG™ with Guide Bars

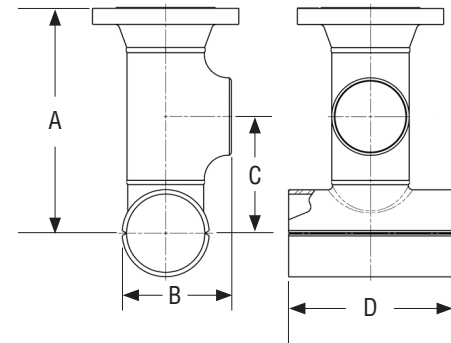
## 300D 3-WAY™ Tee Class 300 and SHORTPLUGS™ with Guide Bars

Maximum Allowable Operating Pressure (in psi) Per ASME B31.8 at -20 to +100° F

Size		Weight		Design Factor				Part Number
Inches	DN	Lbs.	Kg.	0.72	0.60	0.50	0.40	
4	100	100	45	740	740	740	740	26-1535-0403-31
6	150	185	83	740	740	740	635	26-1535-0603-31
8	200	200	91	740	740	665	530	26-1535-0803-31
10*	250	495	225	740	700	585	465	26-1535-1003-31
12*	300	730	331	740	645	535	430	26-1535-1203-31

\*NOTE: 300D 10- and 12-inch 3-WAY Tees cannot be tapped using the T-203 Tapping Machine due to insufficient travel.

4- through 12-inch fittings are complete with blind flange, studs, nuts, gasket, O-ring, and SHORTPLUG with Guide bars.



## Dimensions

Size		A**		B		C		D	
Inches	DN	Inches	mm	Inches	mm	Inches	mm	Inches	mm
4	100	14.50	368	4.13	105	10.75	273	7.25	184
6	150	19.19	487	5.63	143	14.00	356	9.94	252.4
8	200	23.56	598	7.00	178	16.50	419	12.44	316
10*	250	28.12	714	8.50	216	20.00	508	15.25	387
12*	300	32.81	830	10.00	254	22.00	559	17.94	455.7

\*NOTE: 300D 10- and 12-inch 3-WAY Tees cannot be tapped using the T-203 Tapping Machine due to insufficient travel.

\*\* 4- through 12-inch Flange Dimension A does not include blind flange and gasket

## Spare O-Rings

Size		Part Number
Inches	DN	
4	100	00-1250-0001
6	150	00-1250-0002
8	200	00-1250-0003
10	250	00-1250-0004
12	300	00-1250-0005

## SHORTPLUGS™ with Guide Bars for SHORTSTOPP® 3-WAY™ Tee 300D Full Encirclement

Size			Weight	
Inches	DN	Part Number	Lbs.	Kg.
4	100	07-1553-0000-61	6	3
6	150	07-1554-0000-61	12	5
8	200	07-1555-0000-61	23	10
10	250	07-1556-0000-61	36	16
12	300	07-1557-0000-61	58	26



# SHORTSTOPP® 3-WAY™ Tee 300D Full Encirclement and SHORTPLUG™ with Guide Bars - .5 Design Factor

## 300D 3-WAY™ Tee Class 300 and SHORTPLUGS™ with Guide Bars

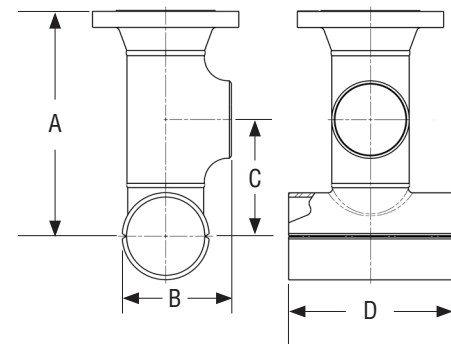
Maximum Allowable Operating Pressure (in psi) Per ASME B31.8 at -20 to +100° F

Size		Weight		Design Factor				Part Number
Inches	DN	Lbs.	Kg.	0.72	0.60	0.50	0.40	
4	100	95	43	740	740	740	740	26-2417-0004-SF
6	150	190	86	740	740	740	592	26-2417-0006-SF
8	200	300	136	740	740	740	592	26-2417-0008-SF
10	250	500	227	740	740	740	592	26-2417-0010-SF
12	300	720	327	740	740	740	592	26-2417-0012-SF

SF: 00 IS WITHOUT BACKUP STRIPS, 01 IS WITH BACKUP STRIPS

\*NOTE: 300D 10- and 12-inch 3-WAY Tees cannot be tapped using the T-203 Tapping Machine due to insufficient travel.

4- through 12-inch fittings are complete with blind flange, studs, nuts, gasket, O-ring, and SHORTPLUG with Guide bars.



## Dimensions

Size		A**		B		C		D	
Inches	DN	Inches	mm	Inches	mm	Inches	mm	Inches	mm
4	100	14.50	368	4.13	105	10.75	273	7.25	184
6	150	19.19	487	5.63	143	14.00	356	9.94	252.4
8	200	23.56	598	7.00	178	16.50	419	12.44	316
10*	250	28.12	714	8.50	216	20.00	508	15.25	387
12*	300	32.81	830	10.00	254	22.00	559	17.94	455.7

\*NOTE: 300D 10- and 12-inch 3-WAY Tees cannot be tapped using the T-203 Tapping Machine due to insufficient travel.

\*\* 4- through 12-inch Flange Dimension A does not include blind flange and gasket

## Spare O-Rings

Size		Part Number
Inches	DN	
4	100	00-1250-0001
6	150	00-1250-0002
8	200	00-1250-0003
10	250	00-1250-0004
12	300	00-1250-0005

## SHORTPLUGS™ with Guide Bars for SHORTSTOPP® 3-WAY™ Tee 300D Full Encirclement

Size			Weight	
Inches	DN	Part Number	Lbs.	Kg.
4	100	07-1886-0004-00	6	3
6	150	07-1886-0006-00	12	5
8	200	07-1886-0008-00	23	10
10	250	07-1886-0010-00	36	16
12	300	07-1886-0012-00	58	26



# SHORTSTOPP® 3-WAY™ Tee 300D Full Encirclement and SHORTPLUG™ with Guide Bars

4-inch Spool Adapter, 06-1165-0181-00 required  
to set the SHORTPLUG™ with Guide Bars

Equipment	Housing	Required
SHORTSTOPP® 500	06-7370-0000	Yes
SHORTSTOPP® 500	08-2143-0000	Yes
SHORTSTOPP® 500	08-2148-0000	Yes

6-inch Spool Adapter, 06-1165-0182-00 required  
to set the SHORTPLUG™ with Guide Bars

Equipment	Housing	Required
SHORTSTOPP® 500	06-7371-0000	Yes
SHORTSTOPP® 500	08-2144-0000	Yes*

\* To set the SHORTPLUG™ with Guide Bars this housing, the 07-1586-0000 completion machine with 48-inch travel is required.

8-inch Spool Adapter, 06-1165-0183-00 required  
to set the SHORTPLUG™ with Guide Bars

Equipment	Housing	Required
SHORTSTOPP® 500	06-7372-0000	Yes
SHORTSTOPP® 500	08-2145-0000	Yes*

\* To set the SHORTPLUG™ with Guide Bars this housing, the 07-1586-0000 completion machine with 48-inch travel is required.

10-inch Spool Adapter, 06-1165-0184-00 required  
to set the SHORTPLUG™ with Guide Bars

Equipment	Housing	Required
SHORTSTOPP® 500	06-7373-0000	Yes*
SHORTSTOPP® 500	08-2146-0000	Yes*
SHORTSTOPP® 500	06-5089-0010	Yes*

\* To set the SHORTPLUG™ with Guide Bars this housing, the 07-1586-0000 completion machine with 48-inch travel is required.

12-inch Spool Adapter, 06-1165-0185-00 required  
to set the SHORTPLUG™ with Guide Bars

Equipment	Housing	Required
SHORTSTOPP® 500	06-7374-0000	Yes*
SHORTSTOPP® 500	08-2147-0000	**
SHORTSTOPP® 500	06-5089-0012	Yes*

\* To set the SHORTPLUG™ with Guide Bars this housing, the 07-1586-0000 completion machine with 48-inch travel is required.

\*\* SHORTPLUG™ with Guide Bars cannot be set with this housing/spool combination