

# ProStopp DS™

## Double Block and Bleed Isolation Tool

Size: 6- to 12-inch

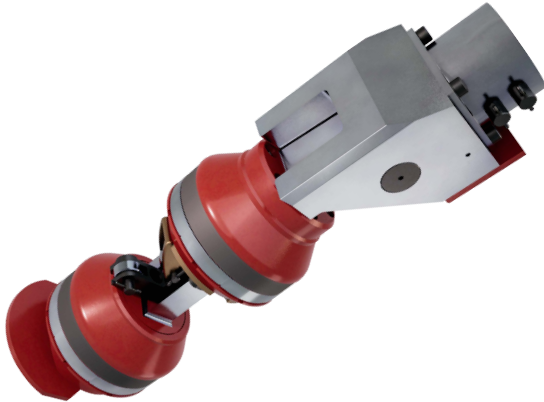


T.D. Williamson

Bulletin No: 2020.003.02

Version: 04.2020

Supersedes: 2020.003.01 (03.2020)



### Description

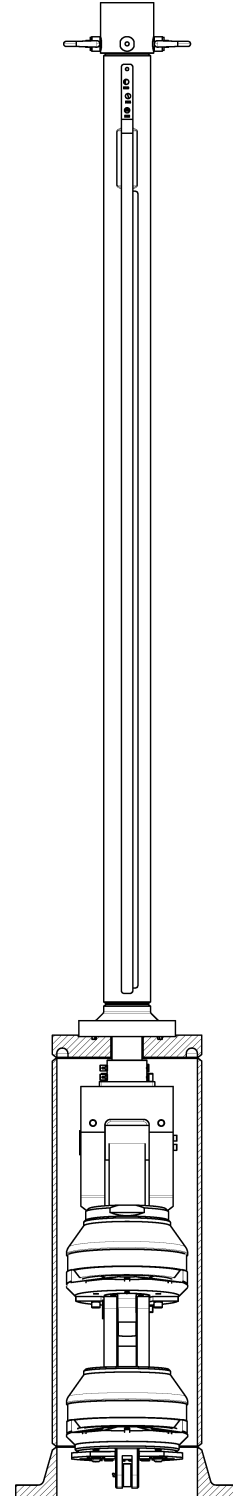
ProStopp DS is a double block and bleed isolation tool designed to efficiently and economically block flow in a pipeline for repairs, relocations, or tie-ins. This hydraulically activated isolation tool uses an energized seal which allows for one sealing element to cover multiple wall thickness per nominal pipe size. The sealing elements can also be used more than once. The double block and bleed feature increases sealing success while decreasing overall risk and completion time.

### Features

Once the tool has been inserted into the pipeline, the ProStopp DS sealing elements expand to compress against the inner wall of the pipe. An integrated chip sweep allows for sweeping without the need for separate tools. The plugging head is smaller than the pipeline inner diameter allowing for easier insertion and retraction.

The ProStopp DS is designed for use with existing TDW SHORSTOPP® fittings and valves, as well as the SHORCUTT® valve. The energized seal accommodates all wall thicknesses from Sch 10-60 and bleeds through the housing to eliminate the need for a purge fitting between the two plugging heads.

ProStopp DS maximum isolation pressure is 285 psi (20 bar), and can be used in carbon steel lines for gas, liquid, or refined oil products at temperatures from 10°F to 180°F.





# ProStopp DS Isolation Tool

## Tool Stack-up/Stroke Calculation

Size		Weld Tee		Spherical Tee 150#		3-Way Tee 150#		Split Tee 300D		Spherical Tee 300D (.5DF)		Spherical Tee 300D	
Inches	mm	Inches	mm	Inches	mm	Inches	mm	Inches	mm	Inches	mm	Inches	mm
6	152	30	762	31	791	38	968	29	742	31	777	41	1030
8	203	35	898	36	904	44	1137	35	889	37	929	49	1246
10	254	48	1226	49	1246	60	1524	58	1460	60	1512	75	1894
12	305	49	1251	50	1258	63	1601	51	1287	53	1350	71	1797

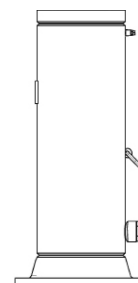
## Jackscrew Actuator Kit\*

Size		Actuator Travel		Overall Length		Weight		Rate of Travel/Revolution		Part Number
Inches	DN	Inches	mm	Inches	mm	Lbs.	Kg.	Inches	mm	
6 to 12	150 to 300	39	997	56	1445	145	66	1/5	5	12363575
6 to 12	150 to 300	55	1397	73	1854	190	86	1/5	5	12363597
6 to 12	150 to 300	75	1905	93	2366	231	105	1/5	5	12363595

\* Kit includes Actuator, Decal, Face Spanner Wrench, Crank, Cap Screw and Hex Keys

## Housings

Size			Part Number	MWP psi	Weight	
Inches	DN	Class			Lbs.	Kg.
6	150	150	12354246	285	70.4	32
6	150	300	12355805	500	88	40
8	200	150	12355404	285	110	50
8	200	300	12355951	500	136	62
12	300	150	12351505	285	244	111
12	300	300	12358642	500	244	111





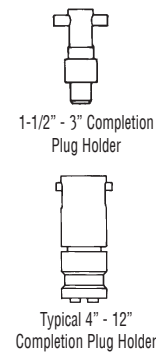
# ProStopp DS Isolation Tool

## Plugging Heads

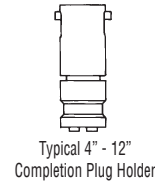
Size		Part Number	Max. Working Pressure in psi	Weight	
Inches	DN			Lbs.	Kg.
6	150	12353369	285	51	23
8	200	12355257	285	114	52
10	250	12357565	285	229	104
12	300	12350480	285	392	178

## Completion Plug Holders

Size		Part Number	Weight	
Inches	DN		Lbs.	Kg.
6 - 8	100 - 200	07-0334-0000	2	1
10 - 12	250 - 300	07-0335-0000	2	1



1-1/2" - 3" Completion Plug Holder



Typical 4" - 12" Completion Plug Holder

## Seal Kits\*

Size		Part Number	MWP psi	Pipe Dimensions			
Inches	DN			Maximum ID Inches	mm	Minimum ID Inches	mm
6	150	12366725	285	6	162	6	149
8	200	12366726	285	8	212	8	198
10	250	12366727	285	10	265	10	247
12	300	12366728	285	12	315	12	295

\* Kit includes Chip Sweep and 2 Seals



## Accessories

Type	Part Number
Handle	00-3164-0001
Air Motor Kit	12362756
Hydraulic Kit	12363568



# ProStopp DS Isolation Tool

## Minor Maintenance Kit\*

Size (inch)	Part Number
6	12363500
8	12363502
10	12363504
12	12363492

\* Kit includes O-rings and Guide Ring

## Major Maintenance Kit

Size (inch)	Part Number
6	12363499
8	12363501
10	12363503
12	12363445

\* Kit includes O-rings and Guide Ring