

Leak Repair Clamp

Sizes: 2- through 48-inch



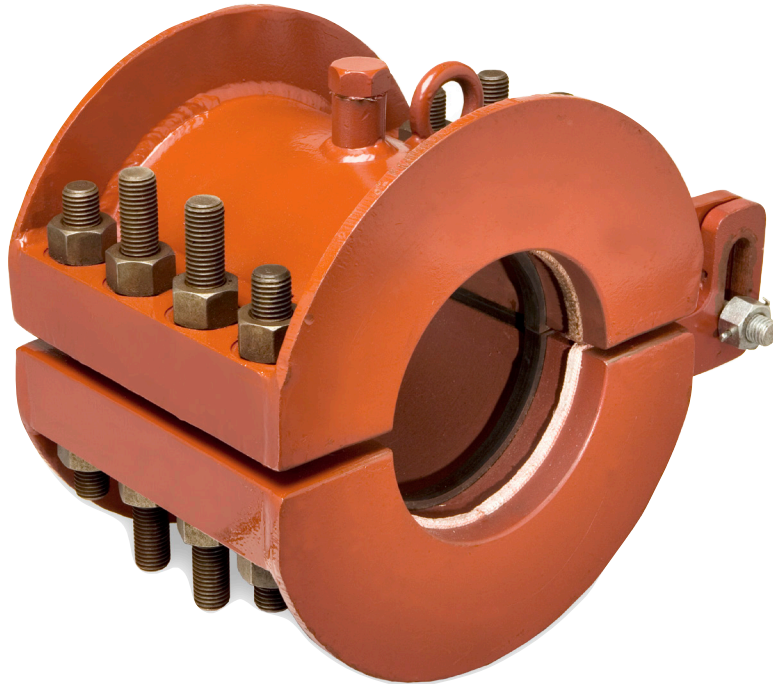
T.D. Williamson, Inc.

Bulletin No: 7300.003.03

Date: January 2011

Cross Indexing No: n/a

Supersedes: 7300.003.02 (06/10)



■ Leak Repair Clamp
600 Class Shown

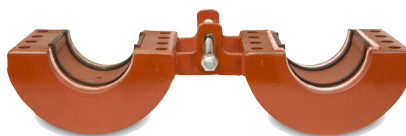
Description

The TDW Leak Repair Clamp is a bolt on clamp designed to stop leaks in 2- through 48-inch hydrocarbon and steam piping systems and petrochemical and cross-country pipelines. The clamp is rated to ASME Class 400, 600 or 900. Welding the clamp will make the application permanent. A lock-in type seal design ensures a pressure type seal against the pipe and an outer heat shield permits welding. Three seal material options cover a temperature range of -20°F to 400°F. The leak repair clamp is a hinged split sleeve that fits around the damaged area of pipe and is bolted for a temporary repair and can be welded for a permanent repair.

Features

Designed per section 5 and 12 of API 6H, the leak repair clamp's quick opening, hinged closure makes repairs easy to conduct. If used only as a temporary seal (not welded), it can be used again by replacing the seals without special tools or grinding.

Use of a Neoprene seal covers a temperature range of -20°F to 225°F. A Buna-N (Nitrile) seal increases the temperature rating to 250°F and Viton® increases it to 400°F. Standard seal length is 5 inches in 2- through 12-inch sizes, and 8 inches in 14- through 48-inch sizes.



Options

When ordering, you can select the size, ASME Class, length of seal, and either Buna-N, Viton® or Neoprene seal material. In addition, other options available include:

- Standard or double relief plug
- Sealant injection port
- Double seal available for offshore use
- Epoxy painting (not recommended when welded)
- Teflon® coated studs, nuts and wet parts
- THREAD-O-RING™ Fitting
- Shrink wrapped for long term storage
- Consult the factory for high and low temperature applications.

Viton® and Teflon® are registered trademarks of DuPont.

Toll Free

1-888-TDWmSon (839-6766)



Leak Repair Clamp

Leak Repair Clamps

RA - XXXX - XXXX - XX

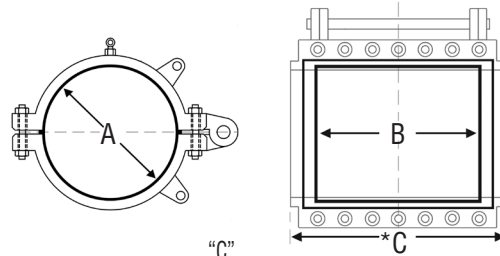
Pipe Size (in inches)		Pressure Rating	Seal Length	Seal Material*	Optional Features
02	26	40 = ASME Class 400	05 = 5-inch	00 = Buna-N	00 = Standard single relief plug assembly
03	28	60 = ASME Class 600	5-inch standard up to 12-inch	01 = Neoprene	01 = Additional relief plug assembly
04	30	90 = ASME Class 900		02 = Viton®	SI = Sealant injection port/plug assembly
06	32		08 = 8-inch		02 = Epoxy painting (not recommended for weldable clamps)
08	34		8-inch standard 14-inch through 48-inch		OF = Double seal design available for offshore service clamp
10	36				03 = Teflon® coated studs and nuts
12	38			04 = Teflon® coated wet-parts and studs	
14	40			05 = Epoxy Paint and Teflon® coated studs and nuts	
16	42			06 = Shrink wrapped for long term storage	
18	44			07 = With 2-inch THREAD-O-RING™ Fitting	
20	46				
22	48				
24					

*To order Seal Material, replace "RA" with "SE" in the part number

Example: RA-0260-0502-01 is a 2-inch, ASME Class 600 clamp with a seal length of 5-inches and Viton® seal material. This customer also chose to add an additional relief plug assembly.



Leak Repair Clamp



Dimensions

"A" Pipe Size			"B" Seal Length			"C" Overall Length						Weight					
						Class 400		Class 600		Class 900		Class 400		Class 600		Class 900	
Inches	Inches	mm	Inches	mm		Inches	mm	Inches	mm	Inches	mm	Lb.	Kg.	Lb.	Kg.	Lb.	Kg.
2	5	127	10.00	254.00	10.00	254.00	9.00	228.60	66	30	99	45	165	75			
3	5	127	10.25	260.35	10.25	260.35	10.25	260.35	84	38	121	55	220	100			
4	5	127	10.25	260.35	10.25	260.35	10.25	260.35	88	40	132	60	276	125			
6	5	127	10.25	260.35	10.25	260.35	11.00	279.40	128	58	152	69	309	140			
8	5	127	10.25	260.35	10.25	260.35	11.00	279.40	154	70	165	75	335	152			
10	5	127	11.00	279.40	11.00	279.40	12.00	304.80	188	85	331	150	353	160			
12	5	127	11.00	279.40	11.00	279.40	12.00	304.80	209	95	452	205	430	195			
14	8	203	14.00	355.60	14.00	355.60	16.00	406.40	295	134	529	240	672	305			
16	8	203	14.00	355.60	14.00	355.60	16.00	406.40	324	147	617	280	750	340			
18	8	203	14.00	355.60	15.98	406.00	16.00	406.40	353	160	705	320	860	390			
20	8	203	14.00	355.60	15.98	406.00	18.00	457.20	417	189	772	350	981	445			
22	8	203	14.00	355.60	15.98	406.00	18.00	457.20	450	204	805	365	1102	500			
24	8	203	14.00	355.60	15.98	406.00	18.00	457.20	521	236	827	375	1168	530			
26	8	203	14.00	355.60	15.98	406.00	18.00	457.20	688	312	992	450	1334	605			
28	8	203	14.02	356.00	15.98	406.00	18.00	457.20	833	378	1235	560	1488	675			
30	8	203	15.98	406.00	15.98	406.00	18.00	457.20	933	423	1301	590	1598	725			
32	8	203	15.98	406.00	15.98	406.00	22.00	558.80	980	445	1349	612	1797	815			
34	8	203	18.00	458.00	17.99	457.00	22.00	558.80	n/a	n/a	1543	700	1984	900			
36	8	203	18.03	458.00	17.99	457.00	22.00	558.80	1129	512	1737	788	2315	1050			
38	8	203	18.00	458.00	17.99	457.00	22.00	558.80	1200	550	1874	850	2646	1200			
40	8	203	18.03	458.00	20.00	508.00	22.00	558.80	1290	585	2260	1025	2976	1350			
42	8	203	20.00	508.00	20.00	508.00	22.00	558.80	1356	615	2381	1080	3197	1450			
44	8	203	20.00	508.00	20.00	508.00	22.00	558.80	1863	845	2420	1100	3417	1550			
46	8	203	18.00	458.00	22.00	558.00	22.00	558.80	2090	950	2700	1215	3748	1700			
48	8	203	20.00	508.00	21.97	558.00	25.00	635.00	2535	1150	2910	1320	4299	1950			



T.D. Williamson, Inc.

7300.003.03 - p4