

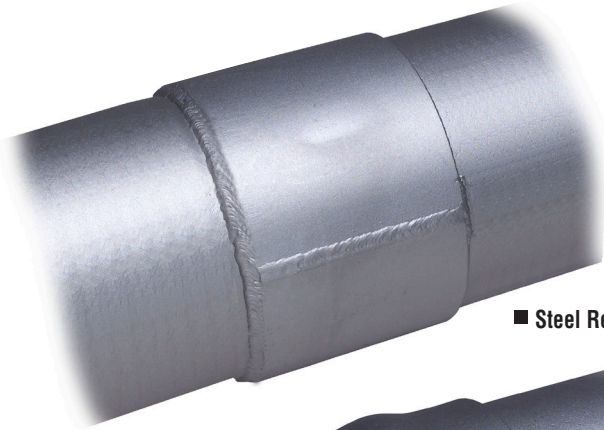


Steel Repair Sleeves

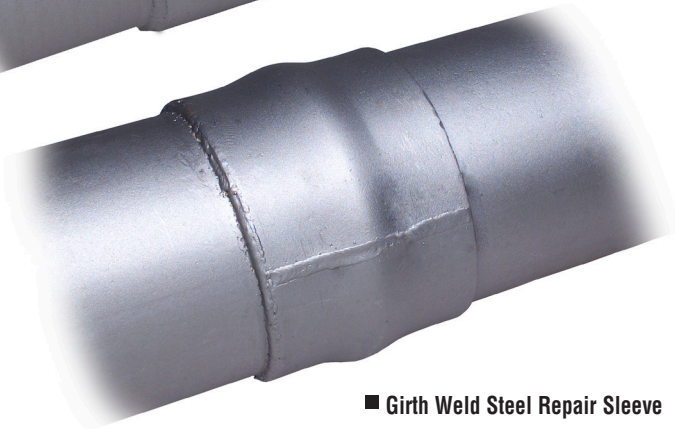
Half-Sole Segments, Sizes: 2- through 48-inch



T.D. Williamson, Inc.
Bulletin No: 7300.002.03
Date: February 2007
Cross Indexing No: n/a
Supersedes: February 2006



■ Steel Repair Sleeve



■ Girth Weld Steel Repair Sleeve

Description

T.D. Williamson, Inc. provides a variety of alternatives to pipeline maintenance needs. The Steel Repair Sleeve is one such option. With the Steel Repair Sleeve, repairs can be made without shutting down the pipeline. Steel Repair Sleeves are available in a variety of sizes, from 2- through 48-inch.

The Steel Repair Sleeves are sold in the Half-Sole configuration. The Half-Sole segment can be used as a pad or cradle while a pair of Half-Sole segments can be used to create a full-encirclement steel sleeve. Steel Repair Sleeves may be made from rolled plate material. This maintenance option is ideal to repair defects in pipelines.

There are four types of material available for the Steel Repair Sleeves, two pressure-rated steels and

two structural-grade steel. The pressure-rated steel sleeves can be used to repair leaking and non-leaking defects while the structural-grade steel sleeves can function as reinforcement for a defective area.

Features

The Steel Repair Sleeves can be used for internal and external corrosion, gouges, dents, grooves, arc burns, cracks, defective girth welds, laminations and leaks.

Pressure containing sleeves feature a wall thickness equal to or greater than required for the maximum allowable operating pressure or the full strength of the pipe being repaired. The Steel Repair Sleeve material is certified and the carbon equivalent (long formula)

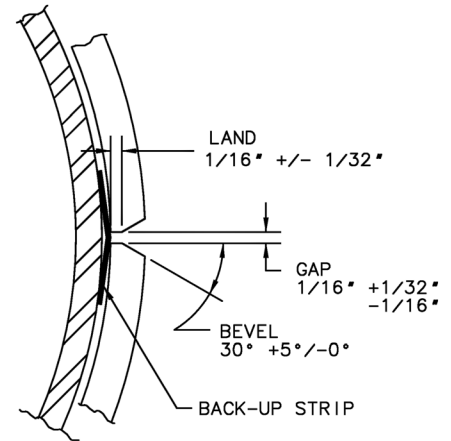
will not exceed 0.45 percent. Each half-sole segment comes with one pre-crimped back-up strip.

Steel Repair Sleeves can be used as pads or cradles for above ground piping, drain tile supports and patches (segments in 90° and 180° arcs, from 6-inches to 10 feet in length are available as specials).

Each Steel Repair Sleeve has standard bevels with a back-up strip and material certifications. Sleeve ends are square cut. Back-up strips are not included with Standard Girth Weld Steel Repair Sleeves but are available as special order.

NOTE: Steel Repair Sleeves are sold as single half-sole segments.

Girth Weld Steel Repair Sleeves are only sold as sets of two, half-sole segments.



Toll Free
1-888-TDWmSon (839-6766)



Steel Repair Sleeves Half-Sole Segments

RS - XXXX - XXXX - XX

Pipe Size (in inches)	Material	Wall Thickness	Finish
02" 24"	00 = ASTM A516 GR 70 - Pressure Vessel Grade	1 = .250-inch	00 = Unpainted
03" 26"	01 = ASTM A537 CL 1 - Pressure Vessel Grade	3 = .375-inch	99 = Painted
04" 28"	02 = ASTM A572 GR 50 - Structural Grade	5 = .500-inch	
06" 30"	03 = ASTM A572 GR 65 - Structural Grade	7 = .625-inch	
08" 32"		9 = .750-inch	
10" 34"			
12" 36"			
14" 40"			
16" 42"			
18" 44"			
20" 46"			
22" 48"			

Pipe Size	Sleeve Length
2 - 3-1/2	5-feet
4 - 12	10-feet
14 - 16	8-feet
All sizes over 16-inch	10-feet

Pipe Size (inches)	Available Thickness (inches)			
	0.188	0.250	0.312	0.375 0.500
2 - 4	X	X		
6		X	X	
8 - 26		X	X	X X
30 - 48			X	X

Available thicknesses marked with "X"

Example: RS-3001-3000-00 is a 30" Half-Sole Steel Repair Sleeve with ASTM A537 CL 1 material, wall thickness of .375-inch, standard bevel with back-up strip, 10 feet long with a painted finish.

NOTE: Steel Repair Sleeves are sold as single half-sole segments.

Girth Weld Steel Repair Sleeves Full-encirclement Sets

RG - XXXX - XXXX - XX

Pipe Size (in inches)	Material	Wall Thickness	Finish
02" 24"	00 = ASTM A516 GR 70 - Pressure Vessel Grade	1 = .250-inch	00 = Unpainted
03" 26"	01 = ASTM A537 CL 1 - Pressure Vessel Grade	3 = .375-inch	99 = Painted
04" 28"	02 = ASTM A572 GR 50 - Structural Grade	5 = .500-inch	
06" 30"	03 = ASTM A572 GR 65 - Structural Grade	7 = .625-inch	
08" 32"		9 = .750-inch	
10" 34"			
12" 36"			
14" 40"			
16" 42"			
18" 44"			
20" 46"			
22" 48"			

Pipe Size	Sleeve Length
2	4-inches
3	5-inches
4 - 8	6-inches
10	8-inches
12	10-inches
14 - 20	11.5-inches
All sizes over 20	12-inches

Pipe Size (inches)	Available Thickness (inches)			
	0.188	0.250	0.375	0.500
2	X			
3-6		X		
8 - 30			X	
36 - 48			X	X

Available thicknesses marked with "X"

Example: RG-3001-3000-00 is a set of 30" Girth Weld Steel Repair Sleeves with ASTM A537 CL 1 material, wall thickness of .375-inch, standard bevel, 12 inches long with unpainted finish.

NOTE: Girth Weld Steel Repair Sleeves are only sold as sets of two, half-sole segments.