



Tapping & Plugging Fittings

For Large-Diameter Water and Wastewater Systems



T.D. Williamson, Inc.

Bulletin No: 1160.001.00

Date: February 1999

Cross Indexing No: n/a

Supersedes: n/a



Options

T. D. Williamson, Inc., is committed to providing you with the exact product to assist you in meeting your individual needs.

Basic designs of fittings are shown. The design may vary due to size or application.

- Various sizes, outlets and pressures are available upon request.
- An optional epoxy coating and stainless steel (1808 type 304) bolts are available upon request.

Description

Today, with the increasing demand to update, expand and revise larger-diameter water mains, the significance of remaining onstream has grown. At the same time, the options of safely fitting the hot tapping and plugging equipment to the water main have increased. Fittings currently available for use in water-main work include both weldable and non-weldable applications for pipe with standard and nonstandard dimensions.

Features

Completion plugs, when installed in the fitting, allow for the recovery of expensive valves and are available for each fitting option.

Fittings, all of which can accommodate a completion plug, are divided into three categories, including weldable, caulk-joint and mechanically-mounted.

All fittings provided by TDW Services come with a standard shop paint coating and alloy bolts per AWWA C-111, ANSI 21.11 standards. All welds are made per applicable AWWA standards. Maximum allowable working pressure for all fittings is 150 psi.

Toll Free

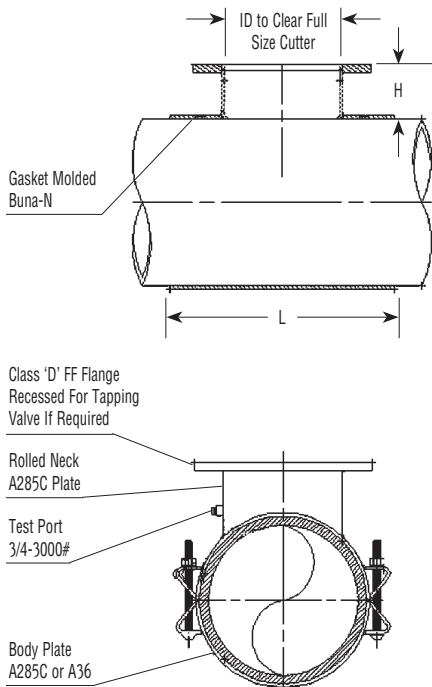
1-800-828-1988

1-888-TDWmSon (839-6766)



Tapping Fittings

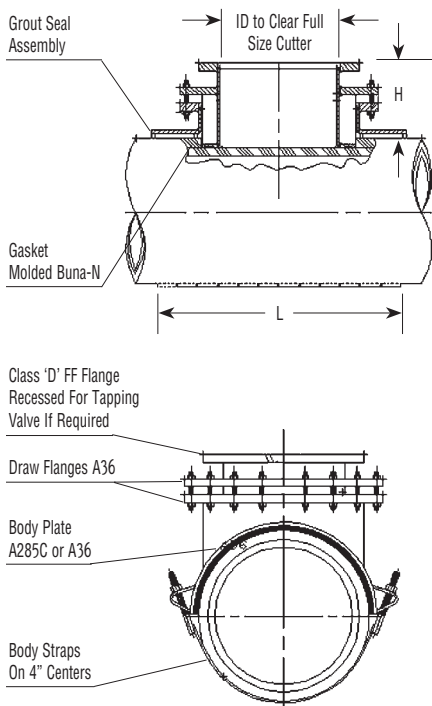
Hot Tap Fitting, Top Seal, For Cast/Ductile Iron Pipe



Sizes for Cast / Ductile Iron Pipe	L	H	Part Number
12" Outlet x 14" Nominal Pipe	24"	5-3/4"	26-0100-1214-01
12" Outlet x 16" Nominal Pipe	24"	5-3/4"	26-0100-1216-01
12" Outlet x 18" Nominal Pipe	24"	5-3/4"	26-0100-1218-01
12" Outlet x 20" Nominal Pipe	24"	5-3/4"	26-0100-1220-01
16" Outlet x 24" Nominal Pipe	28"	5-3/4"	26-0100-1624-01
24" Outlet x 30" Nominal Pipe	44"	5-3/4"	26-0100-2430-01
24" Outlet x 36" Nominal Pipe	48"	5-3/4"	26-0100-2436-01
36" Outlet x 40" Nominal Pipe	60"	5-3/4"	26-0100-3640-01
36" Outlet x 42" Nominal Pipe	60"	5-3/4"	26-0100-3642-01
36" Outlet x 48" Nominal Pipe	60"	5-3/4"	26-0100-3648-01
36" Outlet x 54" Nominal Pipe	76"	5-3/4"	26-0100-3654-01
36" Outlet x 60" Nominal Pipe	80"	5-3/4"	26-0100-3660-01
48" Outlet x 66" Nominal Pipe	72"	5-3/4"	26-0100-4866-01
48" Outlet x 72" Nominal Pipe	72"	5-3/4"	26-0100-4872-01
60" Outlet x 84" Nominal Pipe	96"	6-3/4"	26-0100-6084-01
60" Outlet x 90" Nominal Pipe	120"	6-3/4"	26-0100-6090-01
60" Outlet x 96" Nominal Pipe	120"	6-3/4"	26-0100-6096-01

NOTE: 1. Base design shown. Design may vary due to size or application.
 2. Other body sizes, outlet types and pressure ratings available upon request.
 3. All welds per applicable AWWA standards.
 4. Maximum allowable working pressure: 150 psi.
 5. Finish: Standard-shop coat primer (optional - fusion or liquid epoxy).
 6. Hardware: Standard-alloy steel (optional - 304 stainless steel).

Hot Tap Fitting, Top Seal, For Concrete Steel Cylinder Pipe



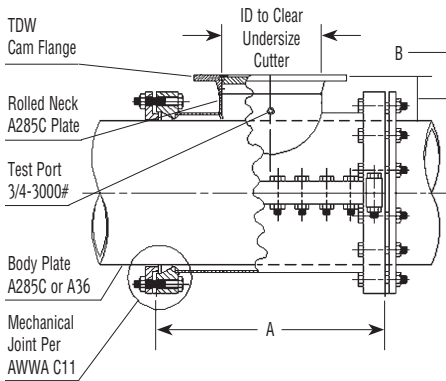
Sizes for Concrete Steel Cylinder Pipe	L	H	Part Number
12" Outlet x 14" Nominal Pipe	32"	4-3/4"	26-0101-1214-01
12" Outlet x 16" Nominal Pipe	32"	4-3/4"	26-0101-1216-01
12" Outlet x 18" Nominal Pipe	32"	4-3/4"	26-0101-1218-01
12" Outlet x 20" Nominal Pipe	32"	4-3/4"	26-0101-1220-01
16" Outlet x 24" Nominal Pipe	36"	8-1/4"	26-0101-1624-01
24" Outlet x 30" Nominal Pipe	56"	9-1/2"	26-0101-2430-01
24" Outlet x 36" Nominal Pipe	60"	9-1/2"	26-0101-2436-01
36" Outlet x 40" Nominal Pipe	60"	9-1/2"	26-0101-3640-01
36" Outlet x 42" Nominal Pipe	60"	9-1/2"	26-0101-3642-01
36" Outlet x 48" Nominal Pipe	64"	9-1/2"	26-0101-3648-01
36" Outlet x 54" Nominal Pipe	80"	9-1/2"	26-0101-3654-01
36" Outlet x 60" Nominal Pipe	84"	9-1/2"	26-0101-3660-01
48" Outlet x 66" Nominal Pipe	96"	11-5/8"	26-0101-4866-01
48" Outlet x 72" Nominal Pipe	96"	11-3/4"	26-0101-4872-01
60" Outlet x 84" Nominal Pipe	120"	14-1/4"	26-0101-6084-01
60" Outlet x 90" Nominal Pipe	120"	14-1/4"	26-0101-6090-01
60" Outlet x 96" Nominal Pipe	120"	14-1/4"	26-0101-6096-01

NOTE: 1. Base design shown. Design may vary due to size or application.
 2. Other sizes, outlets, body styles and pressure ratings available upon request.
 3. All welds per applicable AWWA standards.
 4. Maximum allowable working pressure: 150 psi.
 5. Finish: Standard-shop coat primer (optional - fusion or liquid epoxy).
 6. Hardware: Standard-alloy steel (optional - 304 stainless steel).



Plugging Fittings

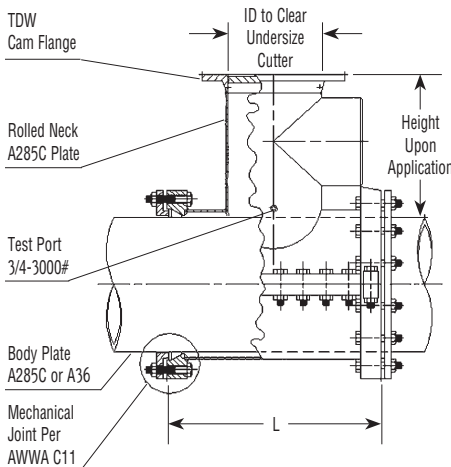
Cam Flange Plugging Fitting, Full Mechanical Joint, For Cast/Ductile Iron Pipe



Sizes for Cast / Ductile Iron Pipe	A	B	Part Number
12" Outlet x 14" Nominal Pipe	24-1/4"	8"	26-0100-1214-04
12" Outlet x 16" Nominal Pipe	24-1/4"	8"	26-0100-1216-04
12" Outlet x 18" Nominal Pipe	24-1/4"	8"	26-0100-1218-04
12" Outlet x 20" Nominal Pipe	24-1/4"	8"	26-0100-1220-04
16" Outlet x 24" Nominal Pipe	32-1/2"	9"	26-0100-1624-04
24" Outlet x 30" Nominal Pipe	45-1/2"	10"	26-0100-2430-04
24" Outlet x 36" Nominal Pipe	45-1/2"	10"	26-0100-2436-04
36" Outlet x 40" Nominal Pipe	62-1/2"	9-1/4"	26-0100-3640-04
36" Outlet x 42" Nominal Pipe	62-1/2"	9-1/4"	26-0100-3642-04
36" Outlet x 48" Nominal Pipe	62-1/2"	9-1/4"	26-0100-3648-04
36" Outlet x 54" Nominal Pipe	62-1/2"	9-1/4"	26-0100-3654-04
36" Outlet x 60" Nominal Pipe	62-1/2"	9-1/4"	26-0100-3660-04
48" Outlet x 66" Nominal Pipe	80-1/2"	11-1/4"	26-0100-4866-04
48" Outlet x 72" Nominal Pipe	80-1/2"	11-1/4"	26-0100-4866-04
60" Outlet x 84" Nominal Pipe	108"	13-1/4"	26-0100-6084-04
60" Outlet x 90" Nominal Pipe	108"	13-1/4"	26-0100-6090-04
60" Outlet x 96" Nominal Pipe	108"	13-1/4"	26-0100-6096-04

- NOTE: 1. Cam plug to be ordered separately. The above fitting does not include a completion plug, blind flange, studs and nuts.
 2. Base design shown. Design may vary due to size or application.
 3. Other sizes, outlets and pressures available upon request.
 4. All welds per applicable AWWA standards.
 5. Maximum allowable working pressure: 150 psi.
 6. Finish: Standard-shop coat primer (optional - fusion or liquid epoxy).
 7. Hardware: Standard-alloy steel (optional - 304 stainless steel).

Cam Flange Plugging Fitting, 3-WAY Tee™, Full Mechanical Joint, For Cast/Ductile Iron Pipe



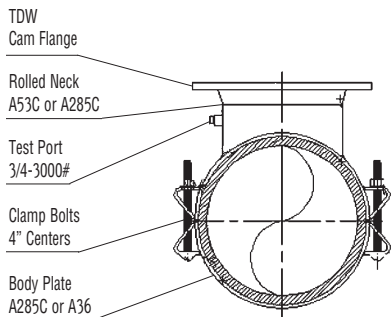
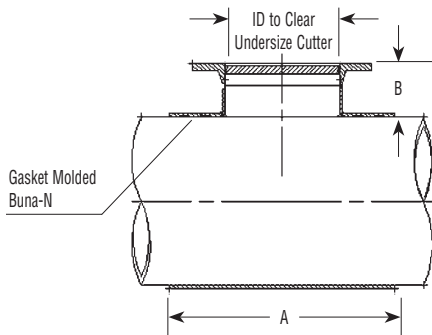
Sizes for Cast / Ductile Iron Pipe	L	Part Number
12" Outlet x 14" Nominal Pipe	24-1/4"	26-0100-1214-08
12" Outlet x 16" Nominal Pipe	24-1/4"	26-0100-1216-08
12" Outlet x 18" Nominal Pipe	24-1/4"	26-0100-1218-08
12" Outlet x 20" Nominal Pipe	24-1/4"	26-0100-1220-08
16" Outlet x 24" Nominal Pipe	32-1/2"	26-0100-1624-08
24" Outlet x 30" Nominal Pipe	45-1/2"	26-0100-2430-08
24" Outlet x 36" Nominal Pipe	45-1/2"	26-0100-2436-08
36" Outlet x 40" Nominal Pipe	62-1/2"	26-0100-3640-08
36" Outlet x 42" Nominal Pipe	62-1/2"	26-0100-3642-08
36" Outlet x 48" Nominal Pipe	62-1/2"	26-0100-3648-08
36" Outlet x 54" Nominal Pipe	62-1/2"	26-0100-3654-08
36" Outlet x 60" Nominal Pipe	62-1/2"	26-0100-3660-08
48" Outlet x 66" Nominal Pipe	80-1/2"	26-0100-4866-08
48" Outlet x 72" Nominal Pipe	80-1/2"	26-0100-4872-08
60" Outlet x 84" Nominal Pipe	108"	26-0100-6084-08
60" Outlet x 90" Nominal Pipe	108"	26-0100-6090-08
60" Outlet x 96" Nominal Pipe	108"	26-0100-6096-08

- NOTE: 1. Cam plug to be ordered separately. The above fitting does not include a completion plug, blind flange, studs and nuts.
 2. Base design shown. Design may vary due to size or application.
 3. Other sizes, outlets and pressures available upon request.
 4. All welds per applicable AWWA standards.
 5. Maximum allowable working pressure: 150 psi.
 6. Finish: Standard-shop coat primer (optional - fusion or liquid epoxy).
 7. Hardware: Standard-alloy steel (optional - 304 stainless steel).
 8. Bevel for weld outlet shown. Outlet flanges and outlet rotation per application.



Plugging Fittings

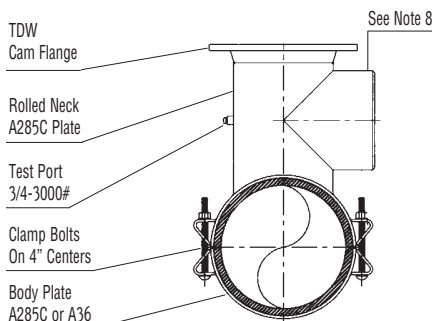
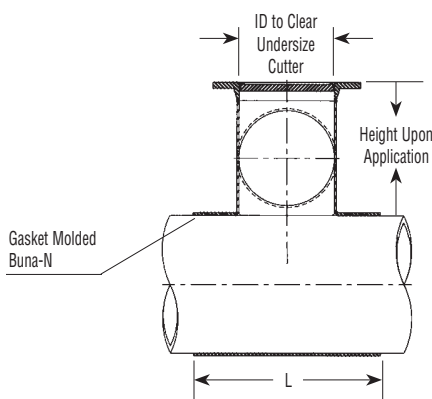
Cam Flange Plugging Fitting, Top Seal, For Concrete Non-Cylinder Pipe



Sizes for Concrete Non-Cylinder Pipe	A	B	Part Number
12" Outlet x 14" Nominal Pipe	32"	7-1/4"	26-0102-1214-02
12" Outlet x 16" Nominal Pipe	32"	7-1/4"	26-0102-1216-02
12" Outlet x 18" Nominal Pipe	32"	7-1/4"	26-0102-1218-02
12" Outlet x 20" Nominal Pipe	32"	7-1/4"	26-0102-1220-02
16" Outlet x 24" Nominal Pipe	36"	9"	26-0102-1624-02
24" Outlet x 30" Nominal Pipe	56"	9"	26-0102-2430-02
24" Outlet x 36" Nominal Pipe	60"	9"	26-0102-2436-02
36" Outlet x 40" Nominal Pipe	72"	9"	26-0102-3640-02
36" Outlet x 42" Nominal Pipe	72"	9"	26-0102-3642-02
36" Outlet x 48" Nominal Pipe	72"	9"	26-0102-3648-02
36" Outlet x 54" Nominal Pipe	76"	9"	26-0102-3654-02
36" Outlet x 60" Nominal Pipe	80"	9"	26-0102-3660-02
48" Outlet x 66" Nominal Pipe	72"	10-1/2"	26-0102-4866-02
48" Outlet x 72" Nominal Pipe	72"	10-1/2"	26-0102-4872-02
60" Outlet x 84" Nominal Pipe	96"	12-1/2"	26-0102-6084-02
60" Outlet x 90" Nominal Pipe	120"	12-1/2"	26-0102-6090-02
60" Outlet x 96" Nominal Pipe	120"	12-1/2"	26-0102-6096-02

- NOTE: 1. Cam plug to be ordered separately. The above fitting does not include a completion plug, blind flange, studs and nuts.
 2. Base design shown. Design may vary due to size or application.
 3. Other sizes, outlets and pressures available upon request.
 4. All welds per applicable AWWA standards.
 5. Maximum allowable working pressure: 150 psi.
 6. Finish: Standard-shop coat primer (optional - fusion or liquid epoxy).
 7. Hardware: Standard-alloy steel (optional - 304 stainless steel).

Cam Flange Plugging Fitting, 3-WAY Tee™, Top Seal, For Concrete Non-Cylinder Pipe



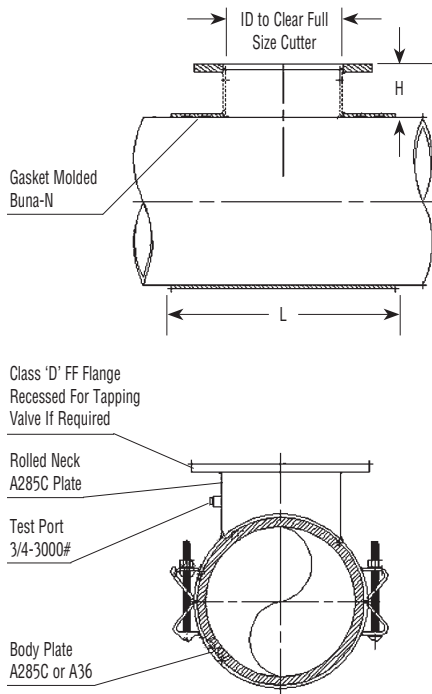
Sizes for Concrete Non-Cylinder Pipe	L	Part Number
12" Outlet x 14" Nominal Pipe	32"	26-0102-1214-04
12" Outlet x 16" Nominal Pipe	32"	26-0102-1216-04
12" Outlet x 18" Nominal Pipe	32"	26-0102-1218-04
12" Outlet x 20" Nominal Pipe	32"	26-0102-1220-04
16" Outlet x 24" Nominal Pipe	36"	26-0102-1624-04
24" Outlet x 30" Nominal Pipe	56"	26-0102-2430-04
24" Outlet x 36" Nominal Pipe	60"	26-0102-2436-04
36" Outlet x 40" Nominal Pipe	72"	26-0102-3640-04
36" Outlet x 42" Nominal Pipe	72"	26-0102-3642-04
36" Outlet x 48" Nominal Pipe	72"	26-0102-3648-04
36" Outlet x 54" Nominal Pipe	76"	26-0102-3654-04
36" Outlet x 60" Nominal Pipe	80"	26-0102-3660-04
48" Outlet x 66" Nominal Pipe	72"	26-0102-4866-04
48" Outlet x 72" Nominal Pipe	72"	26-0102-4872-04
60" Outlet x 84" Nominal Pipe	96"	26-0102-6084-04
60" Outlet x 90" Nominal Pipe	120"	26-0102-6090-04
60" Outlet x 96" Nominal Pipe	120"	26-0102-6096-04

- NOTE: 1. Cam plug to be ordered separately. The above fitting does not include a completion plug, blind flange, studs and nuts.
 2. Base design shown. Design may vary due to size or application.
 3. Other sizes, outlets and pressures available upon request.
 4. All welds per applicable AWWA standards.
 5. Maximum allowable working pressure: 150 psi.
 6. Finish: Standard-shop coat primer (optional - fusion or liquid epoxy).
 7. Hardware: Standard-alloy steel (optional - 304 stainless steel).
 8. Bevel for weld outlet shown. Outlet flanges and outlet rotation per application.



Tapping Fittings

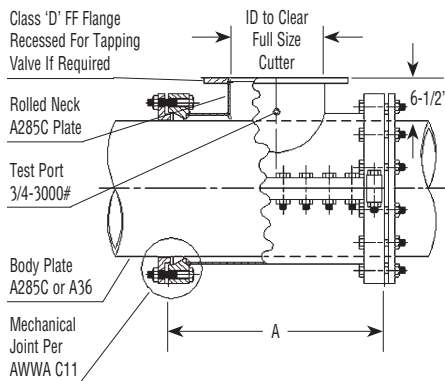
Hot Tap Fitting, Top Seal, For Concrete Non-Cylinder Pipe



Sizes for Concrete Non-Cylinder Pipe	L	H	Part Number
12" Outlet x 14" Nominal Pipe	32"	5-3/4"	26-0102-1214-01
12" Outlet x 16" Nominal Pipe	32"	5-3/4"	26-0102-1216-01
12" Outlet x 18" Nominal Pipe	32"	5-3/4"	26-0102-1218-01
12" Outlet x 20" Nominal Pipe	32"	5-3/4"	26-0102-1220-01
16" Outlet x 24" Nominal Pipe	36"	5-3/4"	26-0102-1624-01
24" Outlet x 30" Nominal Pipe	56"	5-3/4"	26-0102-2430-01
24" Outlet x 36" Nominal Pipe	60"	5-3/4"	26-0102-2436-01
36" Outlet x 40" Nominal Pipe	72"	5-3/4"	26-0102-3640-01
36" Outlet x 42" Nominal Pipe	72"	5-3/4"	26-0102-3642-01
36" Outlet x 48" Nominal Pipe	72"	5-3/4"	26-0102-3648-01
36" Outlet x 54" Nominal Pipe	76"	5-3/4"	26-0102-3654-01
36" Outlet x 60" Nominal Pipe	80"	5-3/4"	26-0102-3660-01
48" Outlet x 66" Nominal Pipe	72"	5-3/4"	26-0102-4866-01
48" Outlet x 72" Nominal Pipe	72"	5-3/4"	26-0102-4872-01
60" Outlet x 84" Nominal Pipe	96"	6-3/4"	26-0102-6084-01
60" Outlet x 90" Nominal Pipe	120"	6-3/4"	26-0102-6090-01
60" Outlet x 96" Nominal Pipe	120"	6-3/4"	26-0102-6096-01

NOTE: 1. Base design shown. Design may vary due to size or application.
 2. Other sizes, outlets and pressures available upon request.
 3. All welds per applicable AWWA standards.
 4. Maximum allowable working pressure: 150 psi.
 5. Finish: Standard-shop coat primer (optional - fusion or liquid epoxy).
 6. Hardware: Standard-alloy steel (optional - 304 stainless steel).

Hot Tap Fitting, Full Mechanical Joint, For Cast/Ductile Iron Pipe



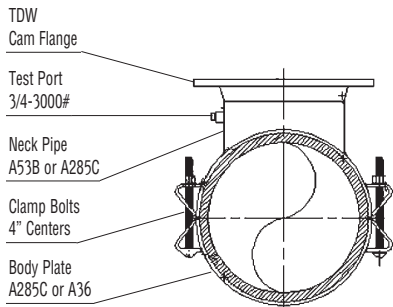
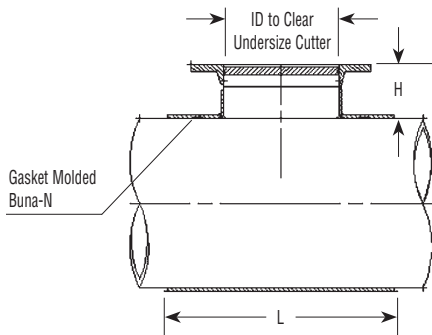
Sizes for Cast / Ductile Iron Pipe	A	Part Number
12" Outlet x 14" Nominal Pipe	24-1/4"	26-0100-1214-02
12" Outlet x 16" Nominal Pipe	24-1/4"	26-0100-1216-02
12" Outlet x 18" Nominal Pipe	24-1/4"	26-0100-1218-02
12" Outlet x 20" Nominal Pipe	24-1/4"	26-0100-1220-02
16" Outlet x 24" Nominal Pipe	32-1/2"	26-0100-1624-02
24" Outlet x 30" Nominal Pipe	45-1/2"	26-0100-2430-02
24" Outlet x 36" Nominal Pipe	45-1/2"	26-0100-2436-02
36" Outlet x 40" Nominal Pipe	62-1/2"	26-0100-3640-02
36" Outlet x 42" Nominal Pipe	62-1/2"	26-0100-3642-02
36" Outlet x 48" Nominal Pipe	62-1/2"	26-0100-3648-02
36" Outlet x 54" Nominal Pipe	62-1/2"	26-0100-3654-02
36" Outlet x 60" Nominal Pipe	62-1/2"	26-0100-3660-02
48" Outlet x 66" Nominal Pipe	80-1/2"	26-0100-4866-02
48" Outlet x 72" Nominal Pipe	80-1/2"	26-0100-4872-02
60" Outlet x 84" Nominal Pipe	108"	26-0100-6084-02
60" Outlet x 90" Nominal Pipe	108"	26-0100-6090-02
60" Outlet x 96" Nominal Pipe	108"	26-0100-6096-02

NOTE: 1. Base design shown. Design may vary due to size or application.
 2. Other sizes, outlets and pressures available upon request.
 3. All welds per applicable AWWA standards.
 4. Maximum allowable working pressure: 150 psi.
 5. Finish: Standard-shop coat primer (optional - fusion or liquid epoxy).
 6. Hardware: Standard-alloy steel (optional - 304 stainless steel).



Plugging Fittings

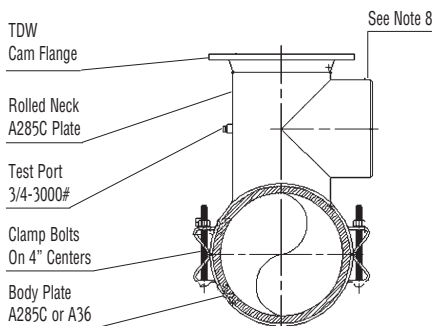
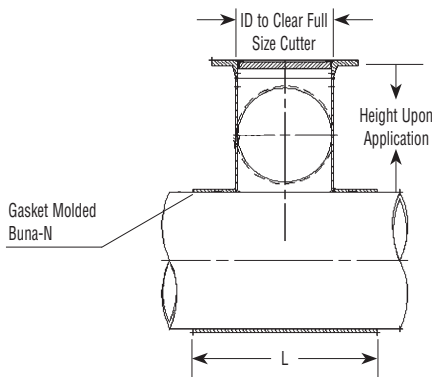
Cam Flange Plugging Fitting, Top Seal, For Cast/Ductile Iron Pipe



Sizes for Cast / Ductile Iron Pipe	L	H	Part Number
12" Outlet x 14" Nominal Pipe	24"	7-1/4"	26-0100-1214-03
12" Outlet x 16" Nominal Pipe	24"	7-1/4"	26-0100-1216-03
12" Outlet x 18" Nominal Pipe	24"	7-1/4"	26-0100-1218-03
12" Outlet x 20" Nominal Pipe	24"	7-1/4"	26-0100-1220-03
16" Outlet x 24" Nominal Pipe	28"	9"	26-0100-1624-03
24" Outlet x 30" Nominal Pipe	44"	9"	26-0100-2430-03
24" Outlet x 36" Nominal Pipe	48"	9"	26-0100-2436-03
36" Outlet x 40" Nominal Pipe	60"	9"	26-0100-3640-03
36" Outlet x 42" Nominal Pipe	60"	9"	26-0100-3642-03
36" Outlet x 48" Nominal Pipe	60"	9"	26-0100-3648-03
36" Outlet x 54" Nominal Pipe	76"	9"	26-0100-3654-03
36" Outlet x 60" Nominal Pipe	80"	9"	26-0100-3660-03
48" Outlet x 66" Nominal Pipe	72"	10-1/2"	26-0100-4866-03
48" Outlet x 72" Nominal Pipe	72"	10-1/2"	26-0100-4872-03
60" Outlet x 84" Nominal Pipe	96"	12-1/2"	26-0100-6084-03
60" Outlet x 90" Nominal Pipe	120"	12-1/2"	26-0100-6090-03
60" Outlet x 96" Nominal Pipe	120"	12-1/2"	26-0100-6096-03

- NOTE: 1. Cam plug to be ordered separately. The above fitting does not include a completion plug, blind flange, studs and nuts.
 2. Base design shown. Design may vary due to size or application.
 3. Other sizes, outlets and pressures available upon request.
 4. All welds per applicable AWWA standards.
 5. Maximum allowable working pressure: 150 psi.
 6. Finish: Standard-shop coat primer (optional - fusion or liquid epoxy).
 7. Hardware: Standard-alloy steel (optional - 304 stainless steel).

Cam Flange Plugging Fitting, 3-WAY Tee™, Top Seal, For Cast/Ductile Iron Pipe



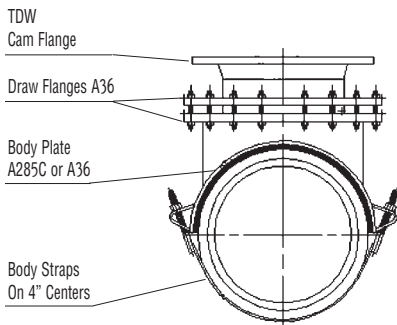
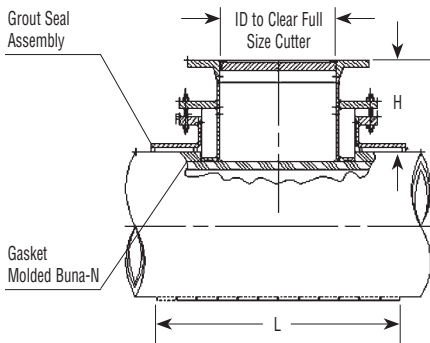
Sizes for Cast / Ductile Iron Pipe	L	Part Number
12" Outlet x 14" Nominal Pipe	24"	26-0100-1214-07
12" Outlet x 16" Nominal Pipe	24"	26-0100-1216-07
12" Outlet x 18" Nominal Pipe	24"	26-0100-1218-07
12" Outlet x 20" Nominal Pipe	24"	26-0100-1220-07
16" Outlet x 24" Nominal Pipe	28"	26-0100-1624-07
24" Outlet x 30" Nominal Pipe	44"	26-0100-2430-07
24" Outlet x 36" Nominal Pipe	48"	26-0100-2436-07
36" Outlet x 40" Nominal Pipe	60"	26-0100-3640-07
36" Outlet x 42" Nominal Pipe	60"	26-0100-3642-07
36" Outlet x 48" Nominal Pipe	60"	26-0100-3648-07
36" Outlet x 54" Nominal Pipe	76"	26-0100-3654-07
36" Outlet x 60" Nominal Pipe	80"	26-0100-3660-07
48" Outlet x 66" Nominal Pipe	72"	26-0100-4866-07
48" Outlet x 72" Nominal Pipe	72"	26-0100-4872-07
60" Outlet x 84" Nominal Pipe	96"	26-0100-6084-07
60" Outlet x 90" Nominal Pipe	120"	26-0100-6090-07
60" Outlet x 96" Nominal Pipe	120"	26-0100-6096-07

- NOTE: 1. Cam plug to be ordered separately. The above fitting does not include a completion plug, blind flange, studs and nuts.
 2. Base design shown. Design may vary due to size or application.
 3. Other sizes, outlets and pressures available upon request.
 4. All welds per applicable AWWA standards.
 5. Maximum allowable working pressure: 150 psi.
 6. Finish: Standard-shop coat primer (optional - fusion or liquid epoxy).
 7. Hardware: Standard-alloy steel (optional - 304 stainless steel).
 8. Bevel for weld outlet shown. Outlet flanges and outlet rotation per application.



Plugging Fittings

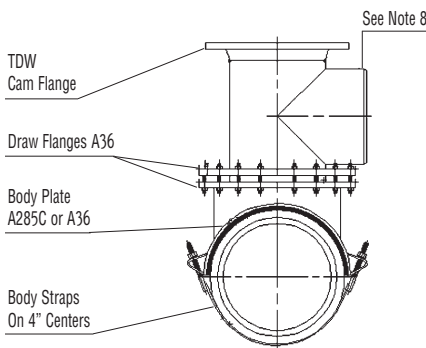
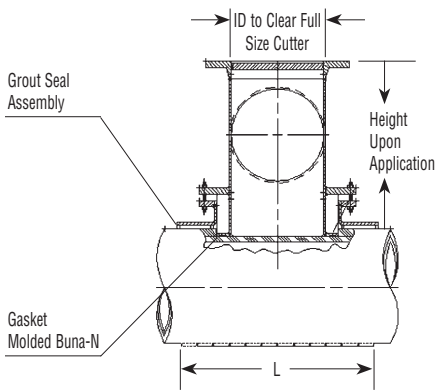
Cam Flange Plugging Fitting, Top Seal, For Concrete Steel Cylinder Pipe



Sizes for Concrete Steel Cylinder Pipe	L	H	Part Number
12" Outlet x 14" Nominal Pipe	32"	9-5/8"	26-0101-1214-02
12" Outlet x 16" Nominal Pipe	32"	9-5/8"	26-0101-1216-02
12" Outlet x 18" Nominal Pipe	32"	9-5/8"	26-0101-1218-02
12" Outlet x 20" Nominal Pipe	32"	9-5/8"	26-0101-1220-02
16" Outlet x 24" Nominal Pipe	36"	12-1/4"	26-0101-1624-02
24" Outlet x 30" Nominal Pipe	56"	13"	26-0101-2430-02
24" Outlet x 36" Nominal Pipe	60"	13"	26-0101-2436-02
36" Outlet x 40" Nominal Pipe	60"	13"	26-0101-3640-02
36" Outlet x 42" Nominal Pipe	60"	13"	26-0101-3642-02
36" Outlet x 48" Nominal Pipe	64"	13"	26-0101-3648-02
36" Outlet x 54" Nominal Pipe	80"	13"	26-0101-3654-02
36" Outlet x 60" Nominal Pipe	84"	13"	26-0101-3660-02
48" Outlet x 66" Nominal Pipe	96"	17-3/8"	26-0101-4866-02
48" Outlet x 72" Nominal Pipe	96"	17-1/2"	26-0101-4872-02
60" Outlet x 84" Nominal Pipe	120"	21-3/8"	26-0101-6084-02
60" Outlet x 90" Nominal Pipe	120"	21-3/8"	26-0101-6090-02
60" Outlet x 96" Nominal Pipe	120"	21-3/8"	26-0101-6096-02

NOTE: 1. Cam plug to be ordered separately. The above fitting does not include a completion plug, blind flange, studs and nuts.
 2. Base design shown. Design may vary due to size or application.
 3. Other sizes, outlets, body styles and pressure ratings available upon request.
 4. All welds per applicable AWWA standards.
 5. Maximum allowable working pressure: 150 psi.
 6. Finish: Standard-shop coat primer (optional - fusion or liquid epoxy).
 7. Hardware: Standard-alloy steel (optional - 304 stainless steel).

Cam Flange Plugging Fitting, 3-WAY Tee™, Top Seal, For Concrete Steel Cylinder Pipe



Sizes for Concrete Steel Cylinder Pipe	L	Part Number
12" Outlet x 14" Nominal Pipe	32"	26-0101-1214-04
12" Outlet x 16" Nominal Pipe	32"	26-0101-1216-04
12" Outlet x 18" Nominal Pipe	32"	26-0101-1218-04
12" Outlet x 20" Nominal Pipe	32"	26-0101-1220-04
16" Outlet x 24" Nominal Pipe	36"	26-0101-1624-04
24" Outlet x 30" Nominal Pipe	56"	26-0101-2430-04
24" Outlet x 36" Nominal Pipe	60"	26-0101-2436-04
36" Outlet x 40" Nominal Pipe	60"	26-0101-3640-04
36" Outlet x 42" Nominal Pipe	60"	26-0101-3642-04
36" Outlet x 48" Nominal Pipe	64"	26-0101-3648-04
36" Outlet x 54" Nominal Pipe	80"	26-0101-3654-04
36" Outlet x 60" Nominal Pipe	84"	26-0101-3660-04
48" Outlet x 66" Nominal Pipe	96"	26-0101-4866-04
48" Outlet x 72" Nominal Pipe	96"	26-0101-4872-04
60" Outlet x 84" Nominal Pipe	120"	26-0101-6084-04
60" Outlet x 90" Nominal Pipe	120"	26-0101-6090-04
60" Outlet x 96" Nominal Pipe	120"	26-0101-6096-04

NOTE: 1. Cam plug to be ordered separately. The above fitting does not include a completion plug, blind flange, studs and nuts.
 2. Base design shown. Design may vary due to size or application.
 3. Other sizes, outlets, body styles and pressure ratings available upon request.
 4. All welds per applicable AWWA standards.
 5. Maximum allowable working pressure: 150 psi.
 6. Finish: Standard-shop coat primer (optional - fusion or liquid epoxy).
 7. Hardware: Standard-alloy steel (optional - 304 stainless steel).
 8. Bevel for weld outlet shown. Outlet flanges and outlet rotation per application.



The Recognized World Leader in Hot Tapping & Pipe Plugging Technologies

TDW's History with the Water and Wastewater Industry

- In the early 1950s, TDW performed the first successful modification to a live operating water system.
- TDW offers folding plugging equipment and specialized fittings.
- TDW performed the first concrete plugging application.
- TDW provides sixty offices around the world.
- TDW holds ISO 9001 & 9002 certifications.
- TDW performs a successful application on a 96" diameter pipe in 1995.
- TDW has over a dozen registered engineers on staff.