



# STOPPLE® Fittings

## ASME B31.4 - Sizes 4- through 12- & 16-inch



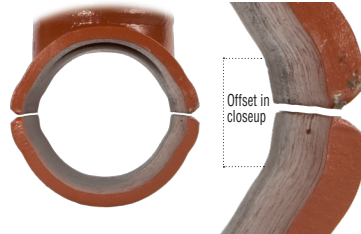
T.D. Williamson, Inc.

Bulletin No: 1100.005.01

Date: November 2008

Cross Indexing No: n/a

Supersedes: October 2007



Offset in closeup

New fittings incorporate a designed and manufactured offset allowing the placement of back-up strips

- **STOPPLE® Fitting**  
LOCK-O-RING® Plug, Blind flange, studs, nuts and gasket sold separately

### Description

STOPPLE® Fittings are 4- through 12-inch & 16-inch full-branch split tees designed for use with the TDW STOPPLE plugging system. They meet B31.4 specifications for use in pipeline transportation systems for liquid hydrocarbons and other liquids. STOPPLE Fittings are furnished with LOCK-O-RING® Flanges to accept a LOCK-O-RING Completion Plug, permitting removal of the tapping valve after work is completed.

### Features

Flange-to-sleeve weld joints and sleeves are designed to meet pressure and reinforcement requirements of ASME codes, and are available in Class 150, 300 and 600. Other ASME Class ratings available upon request.

Fittings are manufactured with a controlled carbon equivalent to make welding easier in harsh environments. Back-up strips are provided for all fittings.

All pressure-containing welds on the fittings have undergone X-ray inspection per ASME requirements.

Fitting sleeves are an extruded type design. They are manufactured from a pressure-vessel quality, normalized, killed carbon steel plate with hardness below Rc22.

The Charpy impact value of the sleeves at -50°F is 15 ft-lbs average with 12 ft-lbs minimum.

### Options

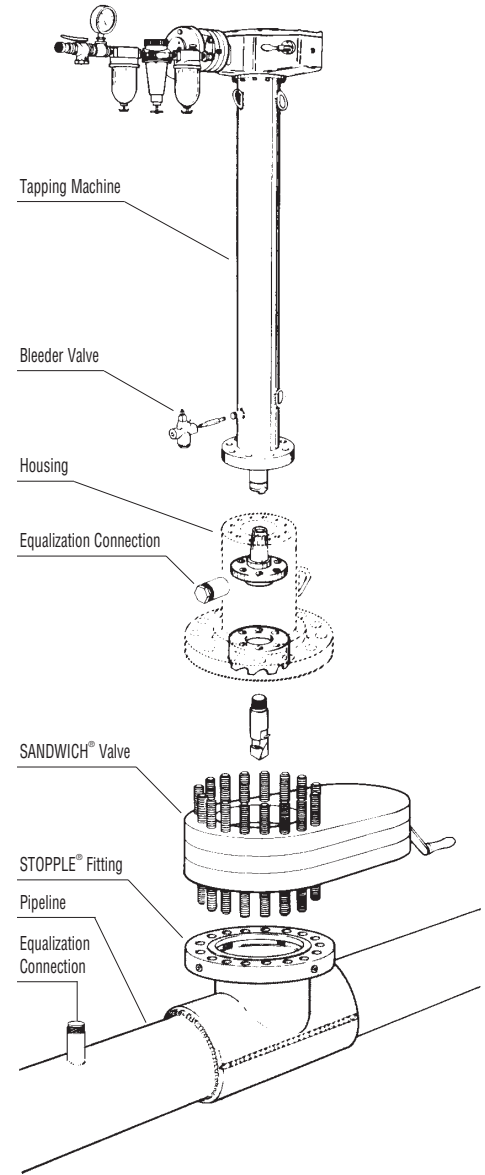
- Rapid delivery: If the desired fitting meets standard specifications, it can be shipped from stock or within two weeks in most cases.
- Choice of flanges.
- Available also to ASME B31.3 and B31.8 specifications

Use the grid inside to develop the part number for the STOPPLE fitting of your choice\*

Contact the factory for information concerning ordering of split sleeves (tees).

\*Please confirm your choice with a Factory Representative

### Typical Tapping Setup For Plugging Operation



ISO 9001 Certified

Toll Free

**1-888-TDWmSon (839-6766)**

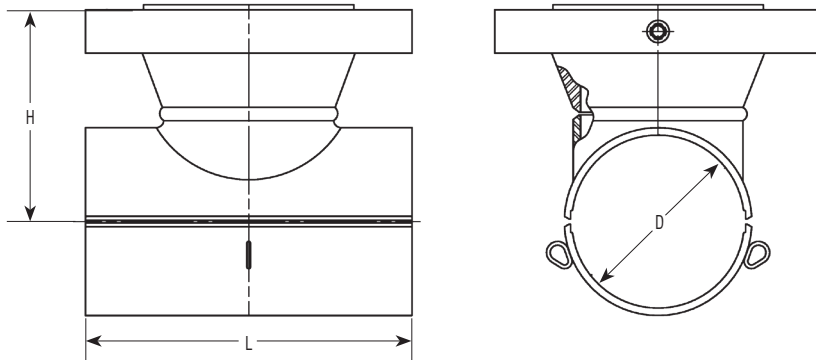


# STOPPLE® Fittings - ASME B31.4

36 - 1043 - XXXX - XX

## Example

36-1043-0430-11 is a STOPPLE® Fitting with 4" (run) x 4" (branch), with an RF standard weight, standard material flange, BUNA-N o-ring, class 300, and A 537 CL. 1 TDW Std. sleeve material with back-up strips.



### STOPPLE® Fitting Size

Inches (Nom.)	Dim. H (Inches)			Dim. L	Dim D
	Class 150	Class 300	Class 600	Inches	Inches
04	7.015	7.015	7.266	10.75	4.656
06	8.828	8.828	9.078	14.00	6.781
08	10.156	10.156	10.406	16.50	8.812
10	10.218	11.218	12.844	20.00	10.938
12	12.406	12.906	13.922	22.00	12.938
16	16.172	16.172	16.546	30.00	16.218

### STOPPLE® Fitting Design Code

Part Number	Option
15	150 LB
30	300 LB
60	600 LB

### Flange and O-Ring Material

Option	Flange/O-Ring Material	O-Ring Temp. Ratings
1X	A105 w/ Buna-N O-Rings	212° F
3X	A105 w/ NEOPRENE O-Rings	225° F
5X	A105 w/ VITON O-Rings	400° F
7X	A105 w/ EPDM O-Rings	250° F / 500° F Steam

Viton® is a registered trademarks of DuPont Performance Elastomers LLC Ltd

### Sleeve Material

Option	Sleeve Material
X1	A537 CL1
X2	A516 GR 70

### Fitting Weights and Pressure Ratings

Size Inches (Nom.)	Weight (lbs.)			MAOP (in psi) @ -20 to 100°F with .72 Design Factor		
	Class 150	Class 300	Class 600	Class 150	Class 300	Class 600
04	55	60	65	285	740	1480
06	90	100	105	285	740	See Note 1
08	135	140	160	285	740	See Note 2
10	190	190	280	285	740	See Note 3
12	300	300	380	285	740	See Note 4
16	580	600	700	285	740	See Note 5

- 1.) P-T rating for A537 CL1 is 1480 PSI. - P-T rating for A516 GR 70 is 1420
- 2.) P-T rating for A537 CL1 is 1480 PSI. - P-T rating for A516 GR 70 is 1130
- 3.) P-T rating for A537 CL1 is 1480 PSI. - P-T rating for A516 GR 70 is 1190
- 4.) P-T rating for A537 CL1 is 1480 PSI. - P-T rating for A516 GR 70 is 1150
- 5.) P-T rating for A537 CL1 is 1480 PSI. - P-T rating for A516 GR 70 is 1170

Consult factory for other pressure and temperature requirements