



SHORTSTOPP® 740

Purge & Equalization Fitting, Size 2"



T. D. Williamson, Inc.

Bulletin No: 2100.009.00

Date: August 2000

Cross Indexing No: n/a

Supersedes: 000.0 (0/0/00)



Shortstopp® 740 Purge & Equalization Fitting Size 2"

Description

The SHORTSTOPP® 740 Purge & Equalization Fitting is used with TDW SHORTSTOPP Machines. It can be installed during new construction and used for blowdown connections on either side of a block valve. The SHORTSTOPP 740 Purge & Equalization Fitting is available in a 2" size.

The fitting accepts corrosion test coupons, thermometer wells, gauge adapters and other instrument probes.

The 2" SHORTSTOPP 740 Purge & Equalization Fitting has a maximum operating pressure of 740 psi and a maximum operating temperature of 180°F (82°C).

Features

The complete SHORTSTOPP® 740 Purge & Equalization Fitting consists of: cap, plug, O-ring, and nipple.

The SHORTSTOPP 740 Purge & Equalization Fitting allows taps to be made without shutdown when using the TDW T-101 Drilling Machine or the 360 Tapping Machine.

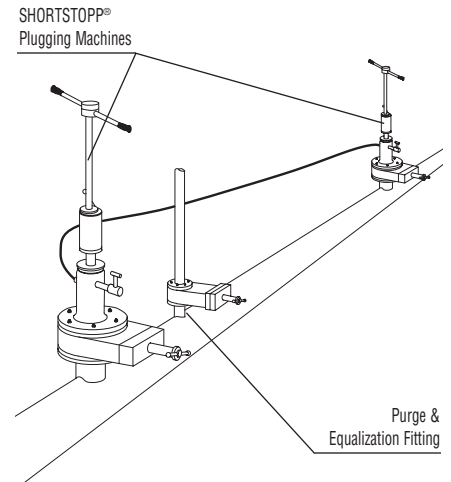
Plugs are set using either the T-101 Drilling Machine or the SHORTSTOPP 500 Completion Machine.

The SHORTSTOPP 740 Purge & Equalization Fitting can be used for instrumentation taps, as well as purge and equalization during plugging operations on pipelines and plant piping.

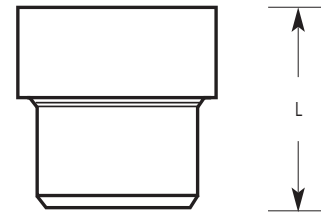
Cap: A105 Forged Steel
Plug: C1213 CF Steel

Nipple: A106 GR B SMLS Steel Pipe
O-Ring: Buna-N

Typical Setup Using SHORTSTOPP® Purge & Equalization Fitting



TDW SHORTSTOPP® Purge & Equalization Fittings are used for blowdown of the isolated pipe section following a double SHORTSTOPP® operation.



Dimensions

Size		Length		Part Number
Inches	DN	Inches	mm	
2	50	3-7/8	98	26-0541-0000

NOTE: For use on 8" and above pipe only.
Bevel required for higher pressure and full penetration weld.

ISO 9001 Certified

Toll Free (U.S.A.)

1-888-TDWmSon (839-6766)



T. D. Williamson, Inc.
