



300D Spherical 3-WAY™ Tees

and **SHORTPLUG™** with Guide Bars for **SHORTSTOPP® PLUGGING** Machines
Sizes 4- to 12-inch



T.D. Williamson

Bulletin No: **2100.017.03**

Version: 12.2022

Supersedes: 2100.017.02 (05.2010)



■ **SHORTSTOPP® 300D**
Spherical 3-WAY™ Tee
with **SHORTPLUG™** with Guide Bars

Description

The **SHORTSTOPP® 300D Spherical 3-WAY™** Tee with **SHORTPLUG™** with Guide Bars, 4-inch and larger, is furnished with a flange, drilled, faced and pressure-rated to match ASME Class 300 flanges. They are used with TDW plugging machines to temporarily plug the line without shutdown while installing a permanent bypass. The bottom half of the fitting can be rotated for a side or a bottom outlet. The flange is machined to accept **SHORTPLUGS** with Guide Bars.

Quality control measures include inspection to ensure a proper fit on the pipeline, flange alignment verification, and radiographic weld inspection* to API Standard 1104.

*100 percent ultrasonic examination performed at TDW's Nivelles, Belgium plant.

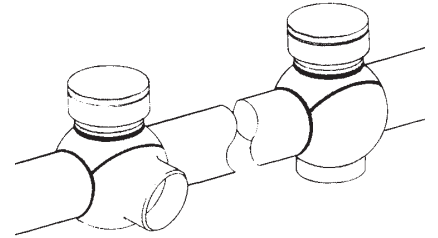
Features

All fittings are stamped with a code number for material identification. Material certificates are available.

The fitting is complete with blind flange, studs, nuts, gasket, O-ring, and **SHORTPLUG** with Guide Bars. The bottom half of the tee can be turned for either a side or bottom outlet. The tee also can be installed horizontally.

With plugging equipment removed, the maximum pressure is 740 psig (49 bar) at 100°F (38° C). The maximum operating temperature is 180°F (82°C) at 675 psig (45 bar) per ASME B31.4. See charts on page 2 for MAOP per ASME B31.8.

Typical Applications



The bottom half of the tee can be turned for either a side or bottom* outlet. The tee can also be installed horizontally.

*Use of **SHORTSTOPP® 275** Plugging Machines is not recommended in bottom outlet configuration.

Class 300 SANDWICH® Valve

Branch

300D Spherical 3-WAY™ Tee

Main

The side outlet plunger can be installed on the control bar of either the **SHORTSTOPP®** Plugging/Completion Machine or the **SHORTSTOPP®** Jackscrew Actuator, and is used on the Spherical 3-WAY™ Tee to plug the tapped hole in the main line. This stops flow into the side outlet, permitting maintenance work on the branch connection.

Maximum working pressure is 275 psi for the side outlet plunger.

300D Spherical 3-WAY™ Tee and SHORTPLUG™ with Guide Bars - .72 Design Factor



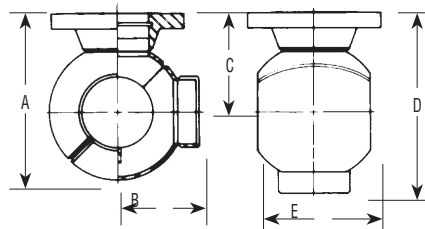
■ 6- to 12-inch

300D Spherical 3-WAY™ Tee Class 300 - .72 Design Factor

Maximum Allowable Operating Pressure in PSI, Per ASME B31.8 at -20 to +100° F

Size Inches	DN	Design Factor				Part Number	Weight		Outlet Type
		0.72	0.60	0.50	0.40		Lbs.	Kg.	
6	150	740	740	659	527	26-1535-0631-21	156	70.8	Standard
8	200	740	684	570	456	26-1535-0831-21	248	112.5	Standard
10	250	740	690	575	460	26-1535-1030-21	364	165.1	Standard
12	300	740	630	525	420	26-1535-1230-21	502	227.7	Standard

The above fittings are complete with cap or blind flange, studs, nuts, gasket, O-ring, and SHORTPLUG with Guide Bars.



Sizes 6- (150 mm), 8- (200 mm), 10- (250 mm) and 12-inch (300 mm)

Dimensions

Size		A		B		C		D		E	
Inches	DN	Inches	mm	Inches	mm	Inches	mm	Inches	mm	Inches	mm
6	150	15.63	397	7.75	197	9.25	235	17.00	432	10.50	267
8	200	16.88	429	8.31	211	9.88	251	18.19	462	10.56	268
10	250	20.84	529	10.41	264	11.84	301	22.25	565	13.88	352
12	300	22.84	580	11.28	287	12.84	326	24.13	613	14.81	376

Spare O-Rings

Size		Part Number
Inches	DN	
6	150	00-1250-0002
8	200	00-1250-0003
10	250	00-1250-0004
12	300	00-1250-0005

SHORTPLUGS™ with Guide Bars for SHORTSTOPP® 300D Spherical 3-WAY™ Tee

Size		Part Number	Weight	
Inches	DN		Lbs.	Kg.
6	150	07-1554-0000-61	11	5
8	200	07-1555-0000-61	21	10
10	250	07-1556-0000-61	33	15
12	300	07-1557-0000-61	55	25



300D Spherical 3-WAY™ Tee

and SHORTPLUG™ with Guide Bars - .50 Design Factor



■ 4- to 12-inch

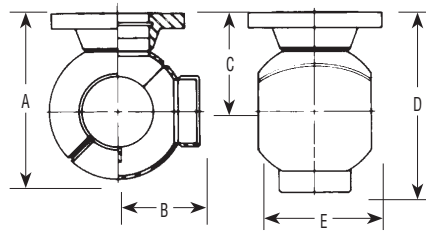
300D Spherical 3-WAY™ Tee Class 300- .50 Design Factor

Maximum Allowable Operating Pressure in PSI, Per ASME B31.8 at -20 to +100° F

Size Inches	DN	Design Factor				Part Number	Weight	
		0.72	0.60	0.50	0.40		Lbs.	Kg.
4	100	740	740	740	740	26-1535-0403-21	140	64
6	150	740	740	740	592	26-2443-0006-SF	160	73
8	200	740	740	740	592	26-2443-0008-SF	260	118
10	250	740	740	740	592	26-2443-0010-SF	430	195
12	300	740	740	740	592	26-2443-0012-SF	870	395

SF: 00 is for standard weight pipe, 01 is for thin-wall pipe.

The above fittings are complete with cap or blind flange, studs, nuts, gasket, O-ring, and SHORTPLUG with Guide Bars.



Sizes 4-inch (100 mm), 6- (150 mm), 8- (200 mm), 10- (250 mm) and 12-inch (300 mm)

Dimensions

Size		A		B		C		D		E	
Inches	DN	Inches	mm	Inches	mm	Inches	mm	Inches	mm	Inches	mm
4	100	11.28	287	5.41	137	6.97	177	12.78	325	6.72	171
6	150	15.63	397	7.72	196	9.25	235	16.97	431	10.28	261
8	200	19.05	484	9.50	241	11.05	281	20.55	522	12.80	325
10	250	23.06	586	11.62	295	13.06	332	24.68	627	16.03	407
12	300	27.20	691	13.70	348	15.20	386	28.90	734	19.34	491

Spare O-Rings

Size		Part Number
Inches	DN	
4	100	00-1250-0001
6	150	00-1250-0002
8	200	00-1250-0003
10	250	00-1250-0004
12	300	00-1250-0005

SHORTPLUGS™ with Guide Bars for SHORTSTOPP® 300D Spherical 3-WAY™ Tee

Size		Part Number	Weight	
Inches	DN		Lbs.	Kg.
4	100	07-1890-0004-00	5	2
6	150	07-1890-0006-00	11	5
8	200	07-1890-0008-00	21	10
10	250	07-1890-0010-00	33	15
12	300	07-1890-0012-00	55	25



300D Spherical 3-WAY™ Tee and SHORTPLUG™ with Guide Bars

4-inch Spool Adapter, 06-1165-0181 required
to set the SHORTPLUG™ with Guide Bars

Equipment	Housing	Required
SHORTSTOPP® 500	06-7370-0000	Yes
SHORTSTOPP® 500	08-2143-0000	No
SHORTSTOPP® 500	08-2148-0000	No

8-inch Spool Adapter, 06-1165-0183 required
to set the SHORTPLUG™ with Guide Bars

Equipment	Housing	Required
SHORTSTOPP® 500	06-7372-0000	No
SHORTSTOPP® 500	08-2145-0000	No

12-inch Spool Adapter, 06-1165-0185 required
to set the SHORTPLUG™ with Guide Bars

Equipment	Housing	Required
SHORTSTOPP® 500	06-7374-0000	No
SHORTSTOPP® 500	08-2147-0000	No

6-inch Spool Adapter, 06-1165-0182
required to set the Pig Guide SHORTPLUG®

Equipment	Housing	Required
SHORTSTOPP® 500	06-7371-0000	Yes
SHORTSTOPP® 500	08-2144-0000	No

10-inch Spool Adapter, 06-1165-0184 required
to set the SHORTPLUG™ with Guide Bars

Equipment	Housing	Required
SHORTSTOPP® 500	06-7373-0000	Yes*
SHORTSTOPP® 500	08-2146-0000	No

* To set the SHORTPLUG™ with Guide Bars with this housing, the 07-1586-0000 completion machine with 48-inch travel is required.